

Appropriate Use Criteria

ACCF/SCCT/ACR/AHA/ASE/ASNC/NASCI/SCAI/SCMR 2010 Appropriate Use Criteria for Cardiac Computed Tomography

A Report of the American College of Cardiology Foundation Appropriate Use Criteria Task Force, the Society of Cardiovascular Computed Tomography, the American College of Radiology, the American Heart Association, the American Society of Echocardiography, the American Society of Nuclear Cardiology, the North American Society for Cardiovascular Imaging, the Society for Cardiovascular Angiography and Interventions, and the Society for Cardiovascular Magnetic Resonance

Allen J. Taylor, MD, FACC, FAHA, *Chair*^a, Manuel Cerqueira, MD, FACC, FASNC^b, John McB. Hodgson, MD, FACC, FSCAI^c, Daniel Mark, MD, MPH, FACC, FAHA^a, James Min, MD, FACC^d, Patrick O'Gara, MD, FACC, FAHA^e, Geoffrey D. Rubin, MD, FSCBTMR^{f,g}, Christopher M. Kramer, MD, FACC, FAHA, *Moderator*, Allen J. Taylor, MD, FACC, FAHA, *Writing Group Liaison*, Daniel Berman, MD, FACC^d, Alan Brown, MD, FACC, FAHA, FNLA^a, Farooq A. Chaudhry, MD, FACC, FAHA, FASE^h, Ricardo C. Cury, MD^{d,i}, Milind Y. Desai, MD, FACC^j, Andrew J. Einstein, MD, PhD, FACC, FAHA, FASNC^b, Antoinette S. Gomes, MD, FAHA, FSIR^f, Robert Harrington, MD, FACC, FAHA, FSCAI^a, Udo Hoffmann, MD, MPH^g, Rahul Khare, MD^j, John Lesser, MD, FACC^d, Christopher McGann, MD, FACC^k, Alan Rosenberg, MD, FACC^l, Robert Schwartz, MD, FACC^c, Marc Shelton, MD, FACC^a, Gerald W. Smetana, MD^m, Sidney C. Smith Jr., MD, FACC, FAHA^e, Michael J. Wolk, MD, MACC, *Chair*, Joseph M. Allen, MA, Steven Bailey, MD, FACC, FSCAI, Pamela S. Douglas, MD, MACC, FAHA, FASE, Robert C. Hendel, MD, FACC, FAHA, FASNC, Christopher M. Kramer, MD, FACC, FAHA, James Min, MD, FACC, FSCCT, Manesh R. Patel, MD, FACC, Leslee Shaw, PhD, FACC, FASNC, Raymond F. Stainback, MD, FACC, FASE

^aOfficial American College of Cardiology Foundation Representative; ^bOfficial American Society of Nuclear Cardiology Representative; ^cOfficial Society for Cardiovascular Angiography and Interventions Representative; ^dOfficial Society of Cardiovascular Computed Tomography Representative; ^eOfficial American Heart Association Representative; ^fOfficial American College of Radiology Representative; ^gOfficial North American Society for Cardiovascular Imaging Representative; ^hOfficial American Society of Echocardiography Representative; ⁱOfficial Society for Cardiovascular Magnetic Resonance Representative; ^jOfficial American College of Emergency Physicians Representative; ^kOfficial Heart Rhythm Society Representative; ^lOfficial Health Plan Representative and ^mOfficial American College of Physicians Representative

Cardiac Computed Tomography Writing Group: A. J. Taylor, M. Cerqueira, J. McB. Hodgson, D. Mark, J. Min, P. O'Gara, G. D. Rubin.

Technical Panel: C. M. Kramer, A. J. Taylor, D. Berman, A. Brown, F. A. Chaudhry, R. C. Cury, M. Y. Desai, A. J. Einstein, A. S. Gomes, R. Harrington, U. Hoffmann, R. Khare, J. Lesser, C. McGann, A. Rosenberg, R. Schwartz, M. Shelton, G. W. Smetana, S. C. Smith, Jr.

ACCF Appropriate Use Criteria Task Force: M. J. Wolk, J. M. Allen, S. Bailey, P. S. Douglas, R. C. Hendel, C. M. Kramer, J. Min, M. R. Patel, L. Shaw, R. F. Stainback.

This document was approved by the American College of Cardiology Foundation, in June 2010; by the American College of Radiology, the American Society of Echocardiography, the American Society of Nuclear Cardiology, the Society for Cardiovascular Angiography and Interventions, the Society for Cardiovascular Magnetic Resonance, Society of Cardiovascular Computed Tomography, and American Heart Association in September 2010; and by the North American Society for Cardiovascular Imaging in November 2010.

The American College of Cardiology Foundation requests that this document be cited as follows: Taylor AJ, Cerqueira M, Hodgson JM, Mark D, Min J, O'Gara P,

Rubin GD. ACCF/SCCT/ACR/AHA/ASE/ASNC/NASCI/SCAI/SCMR 2010 appropriate use criteria for cardiac computed tomography: a report of the American College of Cardiology Foundation Appropriate Use Criteria Task Force, the Society of Cardiovascular Computed Tomography, the American College of Radiology, the American Heart Association, the American Society of Echocardiography, the American Society of Nuclear Cardiology, the Society for Cardiovascular Angiography and Interventions, and the Society for Cardiovascular Magnetic Resonance. *J Am Coll Cardiol* 2010;56:1864–94.

This article is copublished in *Circulation* and originally appeared in the *Journal of the American College of Cardiology*.

Copies: This document is available on the World Wide Web site of the American College of Cardiology (www.cardiosource.org). For copies of this document, please contact Elsevier Inc. Reprint Department, fax (212) 633-3820, e-mail reprints@elsevier.com.

Permissions: Modification, alteration, enhancement, and/or distribution of this document are not permitted without the express permission of the American College of Cardiology Foundation. Please contact Elsevier's permission department healthpermissions@elsevier.com

KEYWORDS:

ACCF Appropriate Use Criteria;
coronary artery bypass graft surgery;
coronary artery disease;
coronary heart disease;
coronary calcium score;
computed tomography;
computed tomographic angiography;
electrocardiogram;
heart failure;
estimated metabolic equivalents of exercise;
myocardial infarction;
percutaneous coronary intervention;
perioperative evaluation

Abstract. The American College of Cardiology Foundation (ACCF), along with key specialty and subspecialty societies, conducted an appropriate use review of common clinical scenarios where cardiac computed tomography (CCT) is frequently considered. The present document is an update to the original CCT/cardiac magnetic resonance (CMR) appropriateness criteria published in 2006, written to reflect changes in test utilization, to incorporate new clinical data, and to clarify CCT use where omissions or lack of clarity existed in the original criteria (1).

The indications for this review were drawn from common applications or anticipated uses, as well as from current clinical practice guidelines. Ninety-three clinical scenarios were developed by a writing group and scored by a separate technical panel on a scale of 1 to 9 to designate appropriate use, inappropriate use, or uncertain use.

In general, use of CCT angiography for diagnosis and risk assessment in patients with low or intermediate risk or pretest probability for coronary artery disease (CAD) was viewed favorably, whereas testing in high-risk patients, routine repeat testing, and general screening in certain clinical scenarios were viewed less favorably. Use of noncontrast computed tomography (CT) for calcium scoring was rated as appropriate within intermediate- and selected low-risk patients. Appropriate applications of CCT are also within the category of cardiac structural and functional evaluation. It is anticipated that these results will have an impact on physician decision making, performance, and reimbursement policy, and that they will help guide future research.

© 2010 by the American College of Cardiology Foundation.

Preface

In an effort to respond to the need for the rational use of imaging services in the delivery of high-quality care, the ACCF has undertaken a process to determine the appropriate use of cardiovascular imaging for selected patient indications.

Appropriate use criteria publications reflect an ongoing effort by the ACCF to critically and systematically create, review, and categorize clinical situations where diagnostic tests and procedures are utilized by physicians caring for patients with cardiovascular diseases. The process is based on current understanding of the technical capabilities of the imaging modalities examined. Although not intended to be entirely comprehensive, the indications are meant to identify common scenarios encompassing the majority of contemporary practice. Given the breadth of information they convey, the indications do not directly correspond to the ninth revision of the *International Classification of Diseases* (ICD-9) system as these codes do not include clinical information, such as symptom status.

The ACCF believes that careful blending of a broad range of clinical experiences and available evidence-based information will help guide a more efficient and equitable allocation of healthcare resources in cardiovascular imaging. The ultimate objective of appropriate use criteria is to improve patient care and health outcomes in a cost-effective manner but is not intended to ignore ambiguity and nuance intrinsic to clinical decision making. Local parameters, such as the availability or quality of equipment or personnel, may influence the selection of appropriate imaging procedures. Appropriate use criteria thus should not be considered substitutes for sound clinical judgment and practice experience.

The ACCF appropriate use criteria process itself is also evolving. In the current iteration, technical panel members were asked to rate indications for CCT in a manner independent and irrespective of the prior published ACCF ratings for CCT and

CMR (1) as well as the prior ACCF ratings for similar diagnostic stress imaging modalities such as cardiac radionuclide imaging (2) or stress echocardiography (3) (see [Appendix A](#) for the definitions of terms used throughout the indication set). Given the iterative nature of the process, readers are counseled not to compare too closely individual appropriate use ratings among modalities rated at different times over the past 2 years. A comparative evaluation of the appropriate use of multiple imaging techniques is currently being undertaken to assess the relative strengths of each modality for various clinical scenarios.

We are grateful to the technical panel, a professional group with a wide range of skills and insights, for their thoughtful and thorough deliberation of the merits of CCT for various indications. In addition to our thanks to the technical panel for their dedicated work and review, we would like to offer special thanks to the many individuals who provided a careful review of the draft indications; to Peggy Christiansen, the ACCF librarian for her comprehensive literature searches; to Lindsey Law, Starr Webb, and Joseph M. Allen, who continually drove the process forward; and to Allen J. Taylor, MD, the chair of the writing committee for his dedication, insight, and leadership.

*Christopher M. Kramer, MD, FACC, FAHA
Moderator, Cardiac Computed Tomography Technical Panel*

*Michael J. Wolk, MD, MACC
Chair, Appropriate Use Criteria Task Force*

Introduction

This report addresses the appropriate use of CCT. Improvements in cardiovascular imaging technology and their application, coupled with increasing therapeutic options for cardiovascular disease, have led to an increase in

cardiovascular imaging. At the same time, the armamentarium of noninvasive diagnostic tools has expanded with innovations in new contrast agents, molecular radionuclide imaging, perfusion echocardiography, computed tomography for coronary angiography and calcium scoring, and magnetic resonance imaging for myocardial structure and viability. As the field of CCT continues to advance along with other imaging modalities, the healthcare community needs to understand how to best incorporate this technology into daily clinical care.

All prior appropriate use criteria publications from the ACCF and collaborating organizations have reflected an ongoing effort to critically and systematically create, review, and categorize the appropriate use of certain cardiovascular diagnostic tests. The ACCF recognizes the importance of revising these criteria in a timely manner in order to provide the cardiovascular community with the most accurate indications. The present document is the second update to an existing appropriate use criteria document, the “ACCF/ACR/SCCT/SCMR/ASNC/NASCI/SCAI/SIR Appropriateness Criteria for Cardiac Computed Tomography and Cardiac Magnetic Resonance Imaging,” published in 2006 (1). Clinicians, payers, and patients are interested in the specific benefits of CCT. Of importance, inappropriate use of CCT may be potentially harmful to patients and generate unwarranted costs to the health care system, whereas appropriate procedures should likely improve patients’ clinical outcomes. This is a critical shift because the intent is for the potential benefits and risks of the treatment to be explicitly considered, rather than the potential usefulness of a diagnostic test as a prelude to further treatment. This document presents the results of this effort, but it is critical to understand the background and scope of this document before interpreting the rating tables.

Methods

The indications included in this review are purposefully broad, and they comprise a wide array of cardiovascular signs and symptoms as well as clinical judgment as to the likelihood of cardiovascular findings.

Further description of the methods used for ranking of the selected clinical indications is outlined in [Appendix B](#) and is also found more generally in a previous publication, “ACCF Proposed Method for Evaluating the Appropriateness of Cardiovascular Imaging” (4). Briefly, this process combines evidence-based medicine and practice experience by engaging a technical panel in a modified Delphi exercise. Because the original CCT/CMR criteria document and methods paper was published, several important processes have been put in place to further enhance this process. They include convening a formal writing committee with diverse expertise in imaging, circulating the indications for external review prior to rating by the technical panel, ensuring appropriate balance of the technical panel, a standardized rating package, and creating formal roles for facilitating panel interaction at the face-to-face meeting.

The panel first rated indications independently. In rating these criteria, the Cardiac Computed Tomography Appropriate Use Criteria Technical Panel was asked to assess whether the use of the test for each indication is appropriate, uncertain, or inappropriate as defined in the following text.

An appropriate imaging study is one in which the expected incremental information, combined with clinical judgment, exceeds the expected negative consequences by a sufficiently wide margin for a specific indication that the procedure is generally considered acceptable care and a reasonable approach for the indication.*

The technical panel scores each indication as follows:

Score 7 to 9

Appropriate test for specific indication (test **is** generally acceptable and **is** a reasonable approach for the indication).

Score 4 to 6

Uncertain for specific indication (test **may** be generally acceptable and **may** be a reasonable approach for the indication). (Uncertainty also implies that more research and/or patient information is needed to classify the indication definitively.)

Score 1 to 3

Inappropriate test for specific indication (test **is not** generally acceptable and **is not** a reasonable approach for the indication).

Then the panel was convened for a face-to-face meeting for discussion of each indication. At this meeting, panel members were provided with their scores and a blinded summary of their peers’ scores. After the consensus meeting, panel members were then asked to independently provide their final scores for each indication. Following the second round ratings, a supplemental rating process was conducted for a revised set of criteria for preoperative testing (31 to 38) and the clinical scenario of prior revascularization (40 to 41). Although these categories had been considered within the original 2 rounds of rating, the clinical scenarios were rewritten to more closely mirror prior documents, and the balloting was repeated.

The contributors acknowledge that the division of these scores into 3 categories of appropriate use is somewhat arbitrary and that the numeric designations should be viewed as a continuum. The contributors also recognize diversity in clinical opinion for particular clinical scenarios. Scores in the intermediate level of appropriate use should therefore be labeled uncertain, as critical patient or research data may be lacking or discordant. This designation should be a prompt to the field to carry out definitive research, whenever possible. It is anticipated that the appropriate use criteria reports will require updates as further data are generated and information from the implementation of the criteria is accumulated.

* Negative consequences include the risks of the procedure (radiation or contrast exposure) and the downstream impact of poor test performance such as delay in diagnosis (false negatives) or inappropriate diagnosis (false positives).

To avoid bias in the scoring process, the technical panel deliberately was not comprised solely of specialists in the particular procedure under evaluation. Specialists, while offering important clinical and technical insights, might have a natural tendency to rate the indications within their specialty as more appropriate than nonspecialists. In addition, care was taken in providing objective, nonbiased information, including guidelines and key references, to the technical panel. Panel members were not provided explicit cost information to help determine their appropriate use ratings, but they were asked to implicitly consider cost as an additional factor in their evaluation of appropriate use.

The level of agreement among panel members, as defined by RAND (5), was analyzed for each indication based on the BIOMED rule for a panel of 14 to 16 (a simplified RAND method for determining disagreement). Per the BIOMED definition, *agreement* was defined as an indication where 4 or fewer panel members ratings fell outside the 3-point region containing the median score. *Disagreement* was defined as a situation where at least 5 panel members ratings fell in both the appropriate and the inappropriate categories. Because the panel had 17 representatives, which exceeded the 16 addressed in this rule, an additional level of agreement analysis as described by RAND was performed that examines the interpercentile range (IPR) compared with the interpercentile range adjusted for symmetry (IPRAS). This information was used by the moderator to guide the panel's discussion by highlighting areas of differences among the panel members. There was also a third category for indications that were not classified in either the agreement or disagreement categories. Any indication having disagreement was categorized as uncertain regardless of the final median score. Indications that met neither definition for agreement or disagreement are in a third, unlabeled, category.

General Assumptions

All indications were considered with the following important assumptions for CCT:

1. CCT is performed in accordance with best practice standards as delineated in the imaging guidelines of the Society of Cardiovascular Computed Tomography (6,7), by competent (8) and appropriately credentialed physicians. This includes the optimization of the scan protocol to limit radiation exposure.
2. CCT imaging equipment is available that has the minimal technical capabilities required for the indication. Typical technical parameters for studies performed on multi-detector row scanners include CT equipment enabling 64 or more slices, submillimeter spatial resolution, and gantry rotation time no greater than 420 milliseconds. Appropriate computer software must be available for image analysis.
3. Patients are optimally suited for CCT under the following conditions:

- a. Regular heart rate and rhythm including a heart rate at a level commensurate with the temporal resolution of the available scanner.
 - b. Body mass index below 40 kg/m².
 - c. Normal renal function.
4. For CT angiography, patient requirements may include the ability to:
 - a. Hold still and follow breathing instructions.
 - b. Tolerate beta blockers.
 - c. Tolerate sublingual nitroglycerin.
 - d. Lift both arms above the shoulders.
 5. All indications for CCT were considered with the following important assumptions:
 - a. All indications should first be evaluated based on the available medical literature.
 - b. In many cases, studies published in the medical literature are reflections of the capabilities and limitations of the test but provide minimal information about the role of the test in clinical decision making.
 - c. Appropriate use criteria development requires determination of a reasonable course of action for clinical decision making based on a risk/benefit trade-off as determined by individual patient indications.
 - 6 For all stress imaging referenced in the indications, the mode of stress testing was assumed to be exercise for patients able to exercise. For patients unable to exercise, pharmacological stress testing was assumed to be used. Further background on the rationale for the assumption of exercise testing is available in the ACC/AHA 2002 Guideline Update for Exercise Testing (9).

Definitions

A complete set of definitions of terms used throughout the indication set is listed in [Appendix A](#). These definitions were provided and discussed with the technical panel prior to ratings of indications.

Ischemic Equivalent Chest Pain Syndrome, Anginal Equivalent, or Ischemic Electrocardiographic Abnormalities: Any constellation of clinical findings that is clinically judged to be consistent with obstructive CAD. Examples of such findings include, but are not limited to, chest pain, chest tightness, burning, shoulder pain, jaw pain, and new electrocardiographic abnormalities suggestive of ischemic heart disease. Nonchest pain symptoms, such as dyspnea or worsening effort tolerance that are felt to be consistent with CAD may also be considered to be an anginal equivalent.

Determining Pretest Risk Assessment for Risk Stratification

Coronary Heart Disease (CHD) Risk in Asymptomatic Patients: Estimation of CHD risk applied to asymptomatic patients without known CHD. It is assumed that

Table A Pretest Probability of CAD by Age, Sex, and Symptoms

Age	Sex	Typical/Definite Angina Pectoris	Atypical/Probable Angina Pectoris	Nonanginal Chest Pain	Asymptomatic
<39	Men	Intermediate	Intermediate	Low	Very low
	Women	Intermediate	Very low	Very low	Very low
40–49	Men	High	Intermediate	Intermediate	Low
	Women	Intermediate	Low	Very low	Very low
50–59	Men	High	Intermediate	Intermediate	Low
	Women	Intermediate	Intermediate	Low	Very low
>60	Men	High	Intermediate	Intermediate	Low
	Women	High	Intermediate	Intermediate	Low

High: >90% pretest probability; intermediate: between 10% and 90% pretest probability; low: between 5% and 10% pretest probability; and very low: <5% pretest probability.

Modified from Gibbons et al. (9) to reflect all age ranges.

clinicians will use CCT studies in addition to standard methods of risk assessment as presented in the National Heart, Lung, and Blood Institute report (10) on “Detection, Evaluation, and Treatment of High Blood Cholesterol in Adults (Adult Treatment Panel III [ATP III]).”

Absolute risk is defined as the probability of developing CHD, including myocardial infarction or CHD death over a given time period. The ATP III report specifies absolute risk for CHD over the next 10 years. CHD risk refers to 10-year risk for any hard cardiac event. However, in acknowledgment that global absolute risk scores may be miscalibrated to certain populations (e.g., women, younger men), clinical judgment must be applied in selecting categorical risk thresholds.

- **CHD Risk—Low:** Defined by the age-specific risk level that is below average. In general, low risk will correlate with a 10-year absolute CHD risk <10%.
- **CHD Risk—Intermediate:** Defined by the age-specific risk level that is average or above average. In general, moderate risk will correlate with a 10-year absolute CHD risk between 10% to 20%. Among women and younger men, an expanded intermediate risk range of 6% to 20% may be appropriate.
- **CHD Risk—High:** Defined as the presence of diabetes mellitus in a patient ≥ 40 years of age, peripheral arterial disease or other coronary risk equivalents, or the 10-year absolute CHD risk of >20%.

Pretest Probability of Obstructive/Significant CAD for Symptomatic (Ischemic Equivalent) Patients:

Once the physician determines the presence of symptoms that may represent obstructive CAD (ischemic equivalent present), the pretest probability of CAD should be assessed. There are a number of risk algorithms (11,12) available that can be used to calculate this probability. Clinicians should become familiar with those that pertain to the populations they encounter most often. In scoring the indications, the following probabilities as calculated from any of the various available algorithms should be applied:

- **Low pretest probability:** <10% pretest probability of CAD.
- **Intermediate pretest probability:** Between 10% and 90% pretest probability of CAD.
- **High pretest probability:** >90% pretest probability of CAD.

The method recommended by the ACC/AHA Guidelines for Chronic Stable Angina (13) is provided in the following text as 1 example of a method used to calculate pretest probability and is a modification of a previously published literature review (14). Please refer to definitions of angina and Table A. Please note that the table only predicts pretest probability in patients based upon presenting symptoms, age, and sex. Additional history and electrocardiographic evidence of prior infarction dramatically affect pretest probability. Although they are not incorporated into the algorithm, cardiovascular risk factors, discussed in risk assessment indications, may also affect pretest likelihood of CAD. Detailed normograms are available that incorporate the effects of a history of prior infarction, electrocardiographic Q waves, electrocardiographic ST- and T-wave changes, diabetes, smoking, and hypercholesterolemia (9).

Abbreviations

ACS = acute coronary syndrome
 CABG = coronary artery bypass grafting surgery
 CAD = coronary artery disease
 CCS = coronary calcium score
 CHD = coronary heart disease
 CT = computed tomography
 CTA = computed tomographic angiography
 ECG = electrocardiogram
 HF = heart failure
 MET = estimated metabolic equivalent of exercise
 MI = myocardial infarction
 PCI = percutaneous coronary intervention

Results of Ratings

The final ratings for CCT (Tables 1 to 7) are listed by indication sequentially as obtained from second round rating sheets submitted by each panel member. The final score reflects the median score of the 17 panel members and has been labeled according to the 3 appropriate use categories of appropriate, uncertain, and inappropriate. Tables 8 to 10 present the indications by these categories. Algorithm Figures 1 to 10 describe the application of criteria as presented in these tables.

A majority of ratings were in agreement as defined in the preceding text, including 66% of appropriate and 55% of

inappropriate indications. In contrast, only 7% of indications rated as uncertain showed agreement, indicating greater diversity of opinion on these indications. Only 2 of the 93 indications (Indications 1 [low] and 15 [low], both of which were rated as uncertain), were statistically classified as being in disagreement. Because these indications were already placed in the uncertain category, no changes were required to reflect disagreement.

Cardiac Computed Tomography Appropriate Use Criteria (By Indication)

Table 1 Detection of CAD in Symptomatic Patients Without Known Heart Disease*

Indication		Appropriate Use Score (1–9)		
Nonacute Symptoms Possibly Representing an Ischemic Equivalent				
Pretest Probability of CAD		Low	Intermediate	High
1.	• ECG interpretable AND • Able to exercise	U (5)	A (7)	I (3)
2.	• ECG uninterpretable OR • Unable to exercise	A (7)	A (8)	U (4)
Acute Symptoms With Suspicion of ACS (Urgent Presentation)				
3.	• Definite MI		I (1)	
4.	• Persistent ECG ST-segment elevation following exclusion of MI		U (6)	
5.	• Acute chest pain of uncertain cause (differential diagnosis includes pulmonary embolism, aortic dissection, and ACS ["triple rule out"])		U (6)	
Pretest Probability of CAD		Low	Intermediate	High
6.	• Normal ECG and cardiac biomarkers	A (7)	A (7)	U (4)
7.	• ECG uninterpretable	A (7)	A (7)	U (4)
8.	• Nondiagnostic ECG OR • Equivocal cardiac biomarkers	A (7)	A (7)	U (4)

A indicates appropriate; I, inappropriate; and U, uncertain.

*Note: All indications are for CTA unless otherwise noted.

Table 2 Detection of CAD/Risk Assessment in Asymptomatic Patients Without Known CAD

Indication		Appropriate Use Score (1–9)		
Noncontrast CT for CCS				
Global CHD Risk Estimate		Low	Intermediate	High
9.	● Family history of premature CHD	A (7)		
10.	● Asymptomatic ● No known CAD	I (2)	A (7)	U (4)
Coronary CTA				
Global CHD Risk Estimate		Low	Intermediate	High
11.	● Asymptomatic ● No known CAD	I (2)	I (2)	U (4)
Coronary CTA Following Heart Transplantation				
12.	● Routine evaluation of coronary arteries	U (6)		

A indicates appropriate; I, inappropriate; and U, uncertain.

Table 3 Detection of CAD in Other Clinical Scenarios

Indication		Appropriate Use Score (1–9)		
New-Onset or Newly Diagnosed Clinical HF and No Prior CAD				
Pretest Probability of CAD		Low	Intermediate	High
13.	● Reduced left ventricular ejection fraction	A (7)	A (7)	U (4)
14.	● Normal left ventricular ejection fraction	U (5)	U (5)	U (4)
Preoperative Coronary Assessment Prior to Noncoronary Cardiac Surgery				
Pretest Probability of CAD		Low	Intermediate	High
15.	● Coronary evaluation before noncoronary cardiac surgery	U (6)	A (7)	I (3)
Arrhythmias—Etiology Unclear After Initial Evaluation				
16.	● New-onset atrial fibrillation (atrial fibrillation is underlying rhythm during imaging)		I (2)	
17.	● Nonsustained ventricular tachycardia		U (6)	
18.	● Syncope		U (4)	
Elevated Troponin of Uncertain Clinical Significance				
19.	● Elevated troponin without additional evidence of ACS or symptoms suggestive of CAD		U (6)	
A indicates appropriate; I, inappropriate; and U, uncertain.				

A indicates appropriate; I, inappropriate; and U, uncertain.

Table 4 Use of CTA in the Setting of Prior Test Results

Indication		Appropriate Use Score (1–9)			
Prior ECG Exercise Testing					
20.	<ul style="list-style-type: none">• Prior normal ECG exercise test• Continued symptoms	A (7)			
Duke Treadmill Score—Risk Findings		Low	Intermediate	High	
21.	<ul style="list-style-type: none">• Prior ECG exercise testing	I (2)	A (7)	I (3)	
Sequential Testing After Stress Imaging Procedures					
22.	<ul style="list-style-type: none">• Discordant ECG exercise and imaging results	A (8)			
Test Result/Ischemia		Equivocal	Mild	Moderate or Severe	
23.	<ul style="list-style-type: none">• Prior stress imaging procedure	A (8)	U (6)	I (2)	
Prior CCS					
24.	<ul style="list-style-type: none">• Zero CCS >5 y ago		U (4)		
25.	<ul style="list-style-type: none">• Positive CCS >2 y ago		I (2)		
CCS		<100	100–400	401–1000	>1000
26.	Diagnostic impact of coronary calcium on the decision to perform contrast CTA in symptomatic patients	A (8)	A (8)	U (6)	U (4)
Asymptomatic OR Stable Symptoms Periodic Repeat Testing in the Setting of Prior Stress Imaging or Prior Coronary Angiography					
Last Study Done		<2 y Ago		≥ 2 y Ago	
27.	<ul style="list-style-type: none">• No known CAD	I (2)		I (3)	
28.	<ul style="list-style-type: none">• Known CAD	I (2)		I (3)	
Evaluation of New or Worsening Symptoms in the Setting of Past Stress Imaging Study					
Previous Stress Imaging Study		Normal		Abnormal	
29.	<ul style="list-style-type: none">• Evaluation of new or worsening symptoms	A (8)		U (6)	

A indicates appropriate; I, inappropriate; and U, uncertain.

Table 5 Risk Assessment Preoperative Evaluation of Noncardiac Surgery Without Active Cardiac Conditions

Indication	Appropriate Use Score (1–9)
Low-Risk Surgery	
30. • Preoperative evaluation for noncardiac surgery risk assessment, irrespective of functional capacity	I (1)
Intermediate-Risk Surgery	
31. • No clinical risk predictors	I (2)
32. • Functional capacity ≥ 4 METs	I (2)
33. • Functional capacity < 4 METs with 1 or more clinical risk predictors	U (5)
34. • Asymptomatic < 1 y following a normal coronary angiogram, stress test, or a coronary revascularization procedure	I (1)
Vascular Surgery	
35. • No clinical risk predictors	I (2)
36. • Functional capacity ≥ 4 METs	I (2)
37. • Functional capacity < 4 METs with 1 or more clinical risk predictors	U (6)
38. • Asymptomatic < 1 y following a normal coronary angiogram, stress test, or a coronary revascularization procedure	I (2)

A indicates appropriate; I, inappropriate; and U, uncertain.

Table 6 Risk Assessment Postrevascularization (PCI or CABG)

Indication		Appropriate Use Score (1–9)	
Symptomatic (Ischemic Equivalent)			
39.	● Evaluation of graft patency after CABG	A (8)	
40.	● Prior coronary stent with stent diameter <3 mm or not known	I (3)	
41.	● Prior coronary stent with stent diameter ≥ 3 mm	U (6)	
Asymptomatic—CABG			
Time Since CABG		<5 y Ago	≥ 5 y Ago
42.	● Prior CABG	I (2)	U (5)
Asymptomatic—Prior Coronary Stenting			
43.	● Prior left main coronary stent ● Stent diameter ≥3 mm	A (7)	
Time Since PCI		<2 y	≥ 2 y
44.	● Stent diameter <3 mm or not known	I (2)	I (2)
45.	● Stent diameter ≥ 3 mm	I (3)	U (4)

A indicates appropriate; I, inappropriate; and U, uncertain.

Table 7 Evaluation of Cardiac Structure and Function

Indication	Appropriate Use Score (1–9)
Adult Congenital Heart Disease	
46. • Assessment of anomalies of coronary arterial and other thoracic arteriovenous vessels	A (9)
47. • Assessment of complex adult congenital heart disease	A (8)
Evaluation of Ventricular Morphology and Systolic Function	
48. • Initial evaluation of left ventricular function • Following acute MI or in HF patients	I (2)

(continued on next page)

Table 7 (continued)

Indication	Appropriate Use Score (1–9)
49. <ul style="list-style-type: none"> • Evaluation of left ventricular function • Following acute MI or in HF patients • Inadequate images from other noninvasive methods 	A (7)
50. <ul style="list-style-type: none"> • Quantitative evaluation of right ventricular function 	A (7)
51. <ul style="list-style-type: none"> • Assessment of right ventricular morphology • Suspected arrhythmogenic right ventricular dysplasia 	A (7)
52. <ul style="list-style-type: none"> • Assessment of myocardial viability • Prior to myocardial revascularization for ischemic left ventricular systolic dysfunction • Other imaging modalities are inadequate or contraindicated 	U (5)
Evaluation of Intra- and Extracardiac Structures	
53. <ul style="list-style-type: none"> • Characterization of native cardiac valves • Suspected clinically significant valvular dysfunction • Inadequate images from other noninvasive methods 	A (8)
54. <ul style="list-style-type: none"> • Characterization of prosthetic cardiac valves • Suspected clinically significant valvular dysfunction • Inadequate images from other noninvasive methods 	A (8)
55. <ul style="list-style-type: none"> • Initial evaluation of cardiac mass (suspected tumor or thrombus) 	I (3)
56. <ul style="list-style-type: none"> • Evaluation of cardiac mass (suspected tumor or thrombus) • Inadequate images from other noninvasive methods 	A (8)
57. <ul style="list-style-type: none"> • Evaluation of pericardial anatomy 	A (8)
58. <ul style="list-style-type: none"> • Evaluation of pulmonary vein anatomy • Prior to radiofrequency ablation for atrial fibrillation 	A (8)
59. <ul style="list-style-type: none"> • Noninvasive coronary vein mapping • Prior to placement of biventricular pacemaker 	A (8)
60. <ul style="list-style-type: none"> • Localization of coronary bypass grafts and other retrosternal anatomy • Prior to reoperative chest or cardiac surgery 	A (8)

A indicates appropriate; I, inappropriate; and U, uncertain.

Cardiac Computed Tomography Appropriate Use Criteria (By Appropriate Use Criteria)

Table 8 Appropriate Indications (Median Score 7–9)

Indication	Appropriate Use Score (1–9)
Detection of CAD in Symptomatic Patients Without Known Heart Disease Symptomatic—Nonacute Symptoms Possibly Representing an Ischemic Equivalent	
1. <ul style="list-style-type: none"> • ECG interpretable AND • Able to exercise • Intermediate pretest probability of CAD 	A (7)
2. <ul style="list-style-type: none"> • ECG uninterpretable or unable to exercise • Low pretest probability of CAD 	A (7)
2. <ul style="list-style-type: none"> • ECG uninterpretable or unable to exercise • Intermediate pretest probability of CAD 	A (8)

(continued on next page)

Table 8 (continued)

Indication	Appropriate Use Score (1–9)
Detection of CAD in Symptomatic Patients Without Known Heart Disease Symptomatic—Acute Symptoms With Suspicion of ACS (Urgent Presentation)	
6. • Normal ECG and cardiac biomarkers • Low pretest probability of CAD	A (7)
6. • Normal ECG and cardiac biomarkers • Intermediate pretest probability of CAD	A (7)
7. • ECG uninterpretable • Low pretest probability of CAD	A (7)
7. • ECG uninterpretable • Intermediate pretest probability of CAD	A (7)
8. • Nondiagnostic ECG or equivocal cardiac biomarkers • Low pretest probability of CAD	A (7)
8. • Nondiagnostic ECG or equivocal cardiac biomarkers • Intermediate pretest probability of CAD	A (7)
Detection of CAD/Risk Assessment in Asymptomatic Individuals Without Known CAD—Noncontrast CT for CCS	
9. • Family history of premature CHD • Low global CHD risk estimate	A (7)
10. • Asymptomatic • No known CAD • Intermediate global CHD risk estimate	A (7)
Detection of CAD in Other Clinical Scenarios—New-Onset or Newly Diagnosed Clinical HF and No Prior CAD	
13. • Reduced left ventricular ejection fraction • Low pretest probability of CAD	A (7)
13. • Reduced left ventricular ejection fraction • Intermediate pretest probability of CAD	A (7)
Detection of CAD in Other Clinical Scenarios—Preoperative Coronary Assessment Prior to Noncoronary Cardiac Surgery	
15. • Coronary evaluation before noncoronary cardiac surgery • Intermediate pretest probability of CAD	A (7)
Use of CTA in the Setting of Prior Test Results—Prior ECG Exercise Testing	
20. • Normal ECG exercise test • Continued symptoms	A (7)
21. • Prior ECG exercise testing • Duke Treadmill Score—intermediate risk findings	A (7)
Use of CTA in the Setting of Prior Test Results—Sequential Testing After Stress Imaging Procedures	
22. • Discordant ECG exercise and imaging results	A (8)
23. • Stress imaging results: equivocal	A (8)
Use of CTA in the Setting of Prior Test Results—Prior CCS	
26. • Diagnostic impact of coronary calcium on the decision to perform contrast CTA in symptomatic patients • CCS <100	A (8)
26. • Diagnostic impact of coronary calcium on the decision to perform contrast CTA in symptomatic patients • CCS 100–400	A (8)
Use of CTA in the Setting of Prior Test Results—Evaluation of New or Worsening Symptoms in the Setting of Past Stress Imaging Study	
29. • Previous stress imaging study normal	A (8)
Risk Assessment Postrevascularization (PCI or CABG)—Symptomatic (Ischemic Equivalent)	
39. • Evaluation of graft patency after CABG	A (8)
Risk Assessment Postrevascularization (PCI or CABG)—Asymptomatic—Prior Coronary Stenting	
43. • Prior left main coronary stent with stent diameter ≥ 3 mm	A (7)

(continued on next page)

Table 8 (continued)

Indication	Appropriate Use Score (1–9)
Evaluation of Cardiac Structure and Function—Adult Congenital Heart Disease	
46. • Assessment of anomalies of coronary arterial and other thoracic arteriovenous vessels	A (9)
47. • Assessment of complex adult congenital heart disease	A (8)
Evaluation of Cardiac Structure and Function—Evaluation of Ventricular Morphology and Systolic Function	
49. • Evaluation of left ventricular function • Following acute MI or in HF patients • Inadequate images from other noninvasive methods	A (7)
50. • Quantitative evaluation of right ventricular function	A (7)
51. • Assessment of right ventricular morphology • Suspected arrhythmogenic right ventricular dysplasia	A (7)
Evaluation of Cardiac Structure and Function—Evaluation of Intra- and Extracardiac Structures	
53. • Characterization of native cardiac valves • Suspected clinically significant valvular dysfunction • Inadequate images from other noninvasive methods	A (8)
54. • Characterization of prosthetic cardiac valves • Suspected clinically significant valvular dysfunction • Inadequate images from other noninvasive methods	A (8)
56. • Evaluation of cardiac mass (suspected tumor or thrombus) • Inadequate images from other noninvasive methods	A (8)
57. • Evaluation of pericardial anatomy	A (8)
58. • Evaluation of pulmonary vein anatomy • Prior to radiofrequency ablation for atrial fibrillation	A (8)
59. • Noninvasive coronary vein mapping • Prior to placement of biventricular pacemaker	A (8)
60. • Localization of coronary bypass grafts and other retrosternal anatomy • Prior to reoperative chest or cardiac surgery	A (8)
A indicates appropriate; I, inappropriate; and U, uncertain.	

Table 9 Uncertain Indications (Median Score 4–6)

Indication	Appropriate Use Score (1–9)
Detection of CAD in Symptomatic Patients Without Known Heart Disease Symptomatic—Nonacute Symptoms Possibly Representing an Ischemic Equivalent	
1. • ECG interpretable and able to exercise • Low pretest probability of CAD	U (5)
2. • ECG uninterpretable or unable to exercise • High pretest probability of CAD	U (4)
Detection of CAD in Symptomatic Patients Without Known Heart Disease Symptomatic—Acute Symptoms With Suspicion of ACS (Urgent Presentation)	
4. • Persistent ECG ST-segment elevation following exclusion of MI	U (6)

(continued on next page)

Table 9 (continued)

Indication		Appropriate Use Score (1–9)
5.	<ul style="list-style-type: none"> Acute chest pain of uncertain cause (differential diagnosis includes pulmonary embolism, aortic dissection, and ACS ["triple rule out"]) 	U (6)
6.	<ul style="list-style-type: none"> Normal ECG and cardiac biomarkers High pretest probability of CAD 	U (4)
7.	<ul style="list-style-type: none"> ECG uninterpretable High pretest probability of CAD 	U (4)
8.	<ul style="list-style-type: none"> Nondiagnostic ECG or equivocal cardiac biomarkers High pretest probability of CAD 	U (4)
Detection of CAD/Risk Assessment in Asymptomatic Individuals Without Known CAD—Noncontrast CT for CCS		
10.	<ul style="list-style-type: none"> Asymptomatic No known CAD High global CHD risk estimate 	U (4)
Detection of CAD/Risk Assessment in Asymptomatic Individuals Without Known CAD—Coronary CTA		
11.	<ul style="list-style-type: none"> Asymptomatic No known CAD High global CHD risk estimate 	U (4)
Detection of CAD/Risk Assessment in Asymptomatic Individuals Without Known CAD—Coronary CTA Following Heart Transplantation		
12.	<ul style="list-style-type: none"> Routine evaluation of coronary arteries 	U (6)
Detection of CAD in Other Clinical Scenarios—New-Onset or Newly Diagnosed Clinical HF and No Prior CAD		
13.	<ul style="list-style-type: none"> Reduced left ventricular ejection fraction High pretest probability of CAD 	U (4)
14.	<ul style="list-style-type: none"> Normal left ventricular ejection fraction Low pretest probability of CAD 	U (5)
14.	<ul style="list-style-type: none"> Normal left ventricular ejection fraction Intermediate pretest probability of CAD 	U (5)
14.	<ul style="list-style-type: none"> Normal left ventricular ejection fraction High pretest probability of CAD 	U (4)
Detection of CAD in Other Clinical Scenarios—Preoperative Coronary Assessment Prior to Noncoronary Cardiac Surgery		
15.	<ul style="list-style-type: none"> Coronary evaluation before noncoronary cardiac surgery Low pretest probability of CAD 	U (6)
Detection of CAD in Other Clinical Scenarios—Arrhythmias—Etiology Unclear After Initial Evaluation		
17.	<ul style="list-style-type: none"> Nonsustained ventricular tachycardia 	U (6)
18.	<ul style="list-style-type: none"> Syncope 	U (4)
Detection of CAD in Other Clinical Scenarios—Elevated Troponin of Uncertain Clinical Significance		
19.	<ul style="list-style-type: none"> Elevated troponin without additional evidence of ACS or symptoms suggestive of CAD 	U (6)
Use of CTA in the Setting of Prior Test Results—Sequential Testing After Stress Imaging Procedures		
23.	<ul style="list-style-type: none"> Stress imaging results: mild ischemia 	U (6)
Use of CTA in the Setting of Prior Test Results—Prior CCS		
24.	<ul style="list-style-type: none"> Zero CCS >5 y ago 	U (4)
26.	<ul style="list-style-type: none"> Diagnostic impact of coronary calcium on the decision to perform contrast CTA in symptomatic patients CCS 401–1000 	U (6)

(continued on next page)

Table 9 (continued)

Indication		Appropriate Use Score (1–9)
26.	<ul style="list-style-type: none"> Diagnostic impact of coronary calcium on the decision to perform contrast CTA in symptomatic patients CCS >1000 	U (4)
Use of CTA in the Setting of Prior Test Results—Evaluation of New or Worsening Symptoms in the Setting of Past Stress Imaging Study		
29.	<ul style="list-style-type: none"> Previous stress imaging study abnormal 	U (6)
Risk Assessment Preoperative Evaluation of Noncardiac Surgery Without Active Cardiac Conditions—Intermediate-Risk Surgery		
33.	<ul style="list-style-type: none"> Functional capacity <4 METs with 1 or more clinical risk predictors 	U (5)
Risk Assessment Preoperative Evaluation of Noncardiac Surgery Without Active Cardiac Conditions—Vascular Surgery		
37.	<ul style="list-style-type: none"> Functional capacity <4 METs with 1 or more clinical risk predictors 	U (6)
Risk Assessment Postrevascularization (PCI or CABG)—Symptomatic (Ischemic Equivalent)		
41.	<ul style="list-style-type: none"> Prior coronary stent with stent diameter ≥ 3 mm 	U (6)
Risk Assessment Postrevascularization (PCI or CABG)—Asymptomatic—CABG		
42.	<ul style="list-style-type: none"> Prior coronary bypass surgery ≥ 5 y ago 	U (5)
Risk Assessment Postrevascularization (PCI or CABG)—Asymptomatic—Prior Coronary Stenting		
44.	<ul style="list-style-type: none"> Stent diameter ≥ 3 mm Greater than or equal to 2 y after PCI 	U (4)
Evaluation of Cardiac Structure and Function—Evaluation of Ventricular Morphology and Systolic Function		
52.	<ul style="list-style-type: none"> Assessment of myocardial viability prior to myocardial revascularization Ischemic left ventricular systolic dysfunction Other imaging modalities are inadequate or contraindicated 	U (5)

A indicates appropriate; I, inappropriate; and U, uncertain.

Table 10 Inappropriate Indications (Median Score 1–3)

Indication		Appropriate Use Score (1–9)
Detection of CAD in Symptomatic Patients Without Known Heart Disease		
Symptomatic—Nonacute Symptoms Possibly Representing an Ischemic Equivalent		
1.	<ul style="list-style-type: none"> ECG interpretable and able to exercise High pretest probability of CAD 	I (3)
Detection of CAD in Symptomatic Patients Without Known Heart Disease		
Symptomatic—Acute Symptoms With Suspicion of ACS (Urgent Presentation)		
3.	<ul style="list-style-type: none"> Definite MI 	I (1)
Detection of CAD/Risk Assessment in Asymptomatic Individuals		
Without Known CAD—Noncontrast CT for CCS		
10.	<ul style="list-style-type: none"> Low global CHD risk estimate 	I (2)

(continued on next page)

Table 10 (continued)

Indication		Appropriate Use Score (1–9)
Detection of CAD/Risk Assessment in Asymptomatic Individuals Without Known CAD—Coronary CTA		
11.	• Low global CHD risk estimate	I (2)
11.	• Intermediate global CHD risk estimate	I (2)
Detection of CAD in Other Clinical Scenarios—Preoperative Coronary Assessment Prior to Noncoronary Cardiac Surgery		
15.	• Coronary evaluation before noncoronary cardiac surgery • High global CHD risk estimate	I (3)
Detection of CAD in Other Clinical Scenarios—Arrhythmias—Etiology Unclear After Initial Evaluation		
16.	• New-onset atrial fibrillation (atrial fibrillation is underlying rhythm during imaging)	I (2)
Use of CTA in the Setting of Prior Test Results—ECG Exercise Testing		
21.	• Exercise ECG testing • Duke Treadmill Score—low-risk findings	I (2)
21.	• Exercise ECG testing • Duke Treadmill Score—high-risk findings	I (3)
Use of CTA in the Setting of Prior Test Results—Sequential Testing After Stress Imaging Procedures		
23.	• Stress imaging results: moderate or severe ischemia	I (2)
Use of CTA in the Setting of Prior Test Results—Prior CCS		
25.	• Positive calcium score >2 y ago	I (2)
Periodic Repeat Testing in Asymptomatic OR Stable Symptoms With Prior Stress Imaging or Coronary Angiography		
27.	• No known CAD • Last study done <2 y ago	I (2)
27.	• No known CAD • Last study done ≥2 y ago	I (3)
28.	• Known CAD • Last study done <2 y ago	I (2)
28.	• Known CAD • Last study done ≥2 y ago	I (3)
Risk Assessment Preoperative Evaluation of Noncardiac Surgery Without Active Cardiac Conditions—Low-Risk Surgery		
30.	• Preoperative evaluation for noncardiac surgery risk assessment, irrespective of functional capacity	I (1)
Risk Assessment Preoperative Evaluation of Noncardiac Surgery Without Active Cardiac Conditions—Intermediate-Risk Surgery		
31.	• No clinical risk predictors	I (2)
32.	• Functional capacity ≥4 METs	I (2)
34.	• Asymptomatic <1 y following a normal coronary angiogram, stress test, or a coronary revascularization procedure	I (1)
Risk Assessment Preoperative Evaluation of Noncardiac Surgery Without Active Cardiac Conditions—Vascular Surgery		
35.	• No clinical risk predictors	I (2)
36.	• Functional capacity ≥4 METs	I (2)
38.	• Asymptomatic <1 y following a normal coronary angiogram, stress test, or a coronary revascularization procedure	I (2)
Risk Assessment Postrevascularization (PCI or CABG)—Symptomatic (Ischemic Equivalent)		
40.	• Prior coronary stent with stent diameter <3 mm or not known	I (3)
Risk Assessment Postrevascularization (PCI or CABG)—Asymptomatic—CABG		
42.	• Prior coronary bypass surgery <5 y ago	I (2)
Risk Assessment Postrevascularization (PCI or CABG)—Asymptomatic—Prior Coronary Stenting		
44.	• Prior coronary stent with stent diameter <3 mm or not known • Less than 2 y after PCI	I (2)
44.	• Prior coronary stent with stent diameter <3 mm or not known • Greater than or equal to 2 y after PCI	I (2)

(continued on next page)

Table 10 (continued)

Indication		Appropriate Use Score (1–9)
45.	<ul style="list-style-type: none">• Prior coronary stent with stent diameter ≥ 3 mm• Less than 2 y after PCI	I (3)
Evaluation of Cardiac Structure and Function—Evaluation of Ventricular Morphology and Systolic Function		
48.	<ul style="list-style-type: none">• Initial evaluation of left ventricular function• Following acute MI or in HF patients	I (2)
Evaluation of Cardiac Structure and Function—Evaluation of Intra- and Extracardiac Structures		
55.	<ul style="list-style-type: none">• Initial evaluation of cardiac mass (suspected tumor or thrombus)	I (3)

A indicates appropriate; I, inappropriate; and U, uncertain.

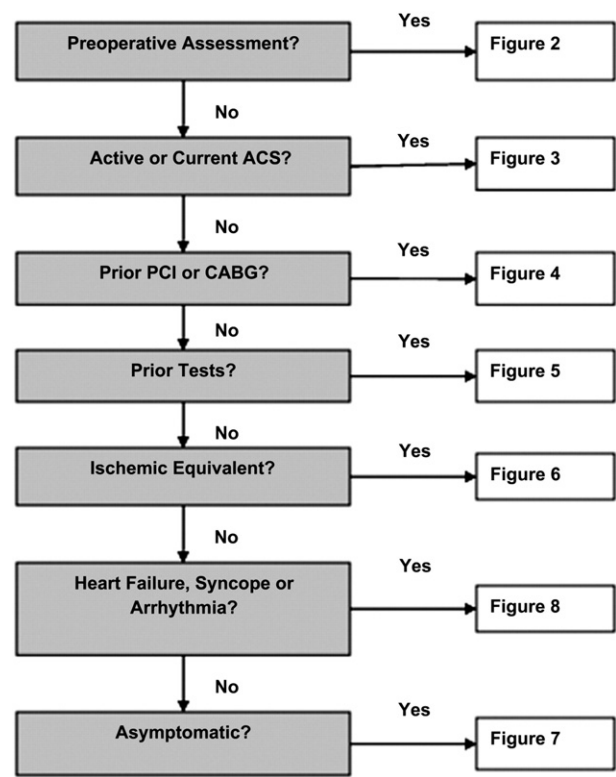


Figure 1 Hierarchy of Potential Test Ordering Based on Clinical Presentation.

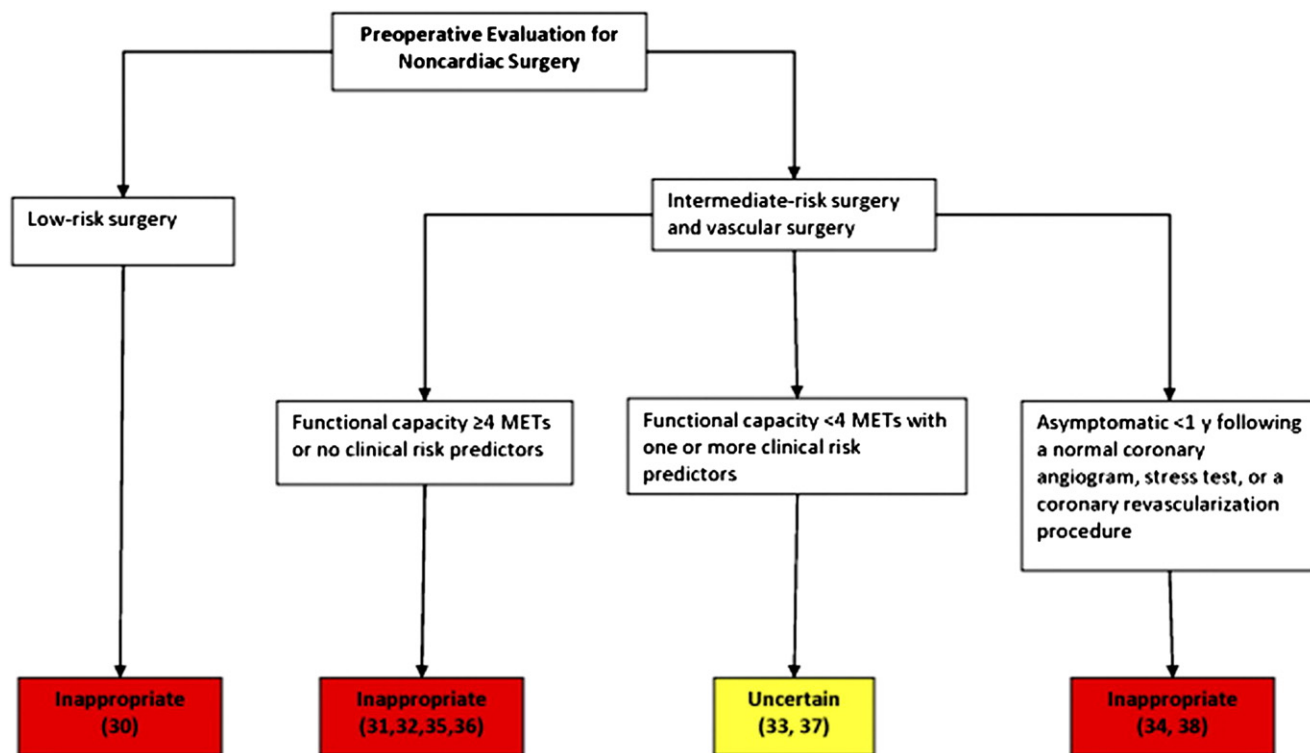


Figure 2 Risk Assessment Preoperative Evaluation of Noncardiac Surgery.

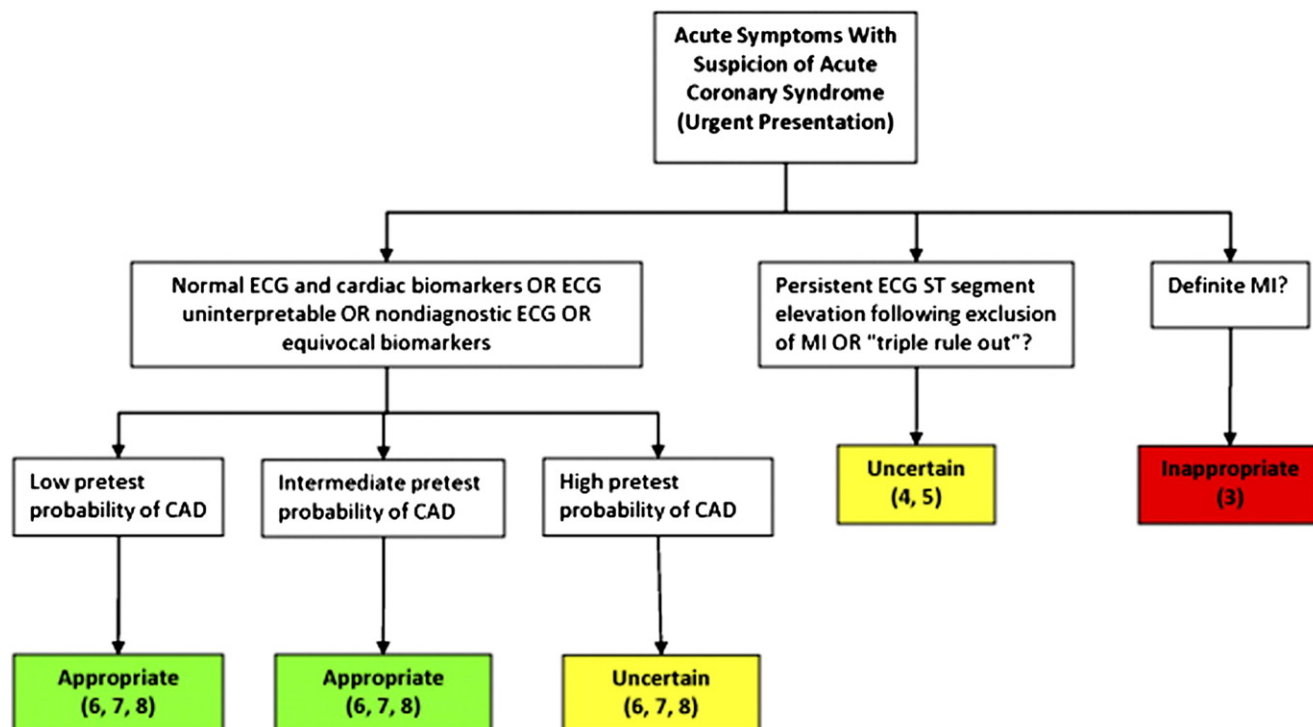


Figure 3 Detection of CAD in Symptomatic Patients Without Known Heart Disease Symptomatic Acute Presentation.

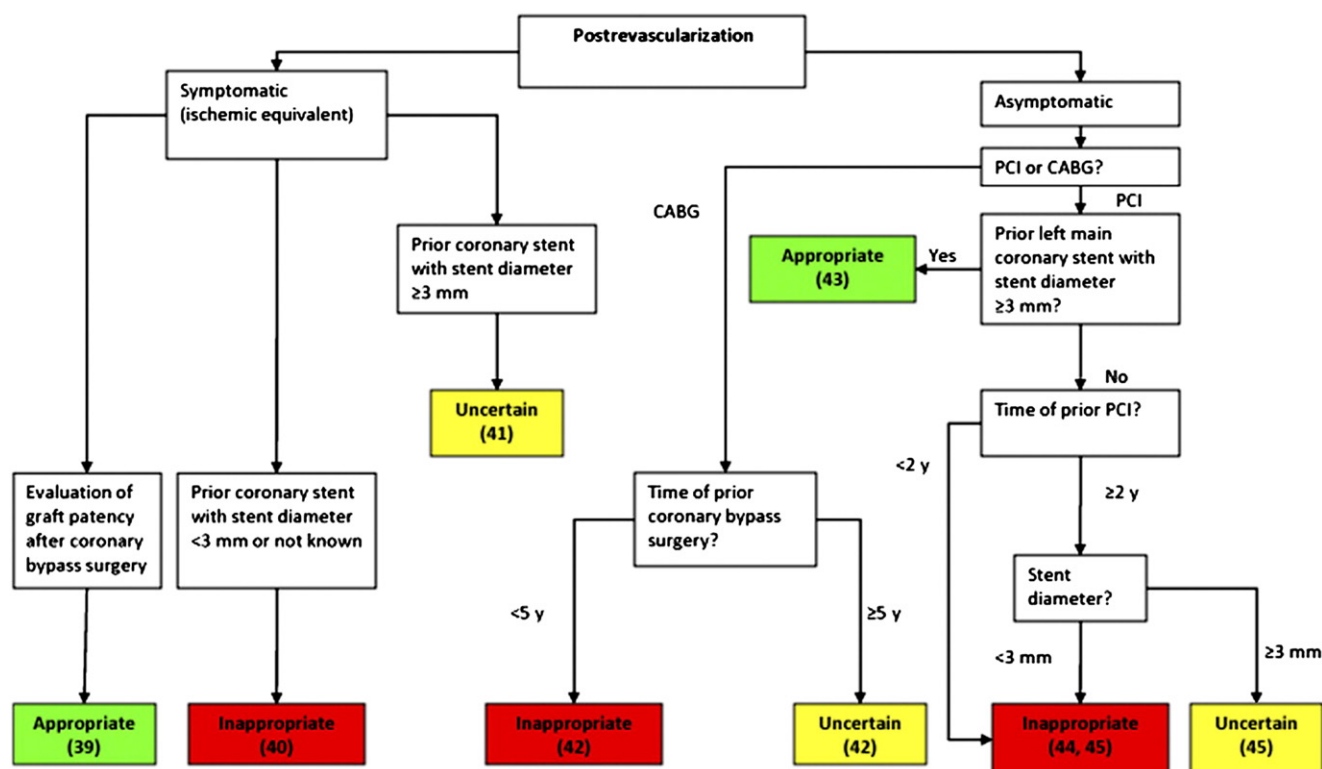


Figure 4 Risk Assessment Postrevascularization (PCI or CABG).

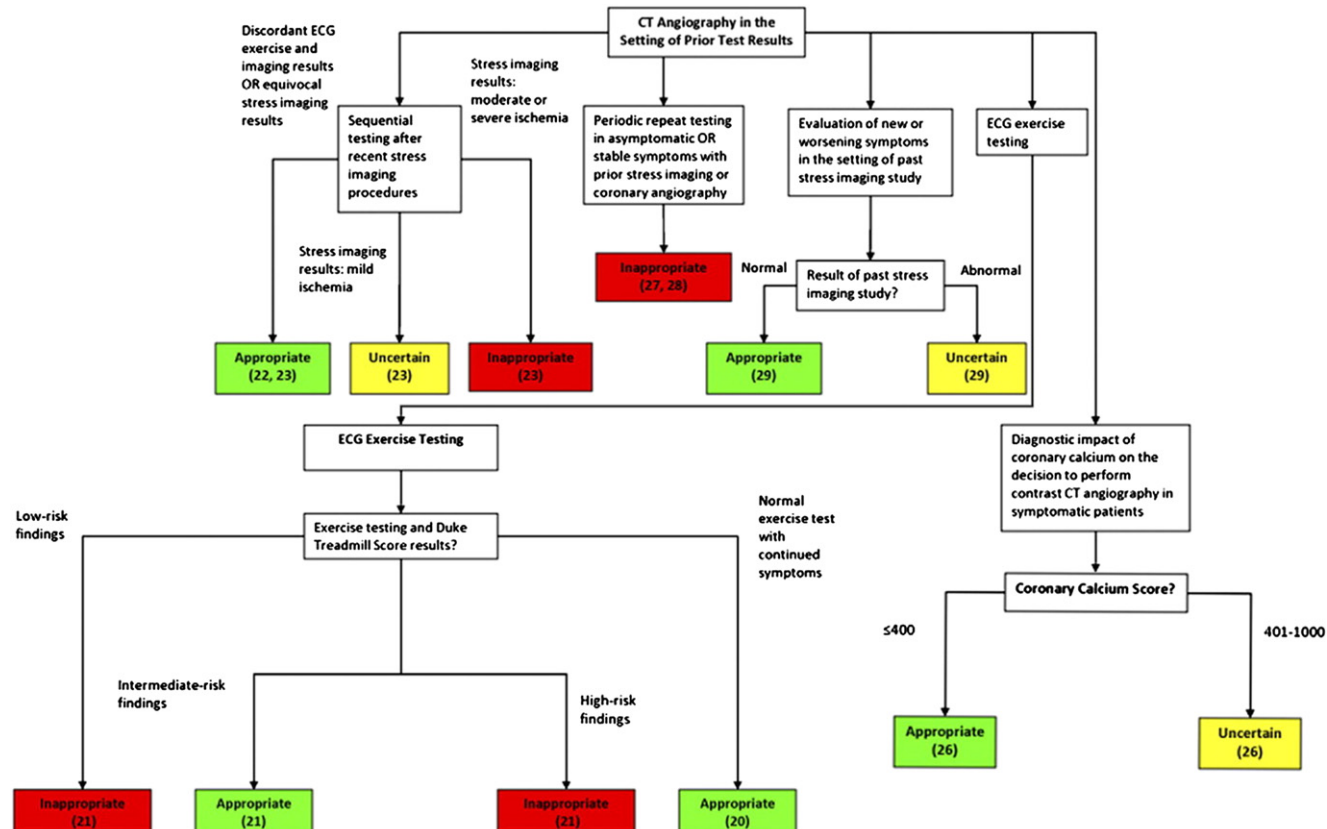


Figure 5 Use of CT Angiography in the Setting of Prior Test Results.

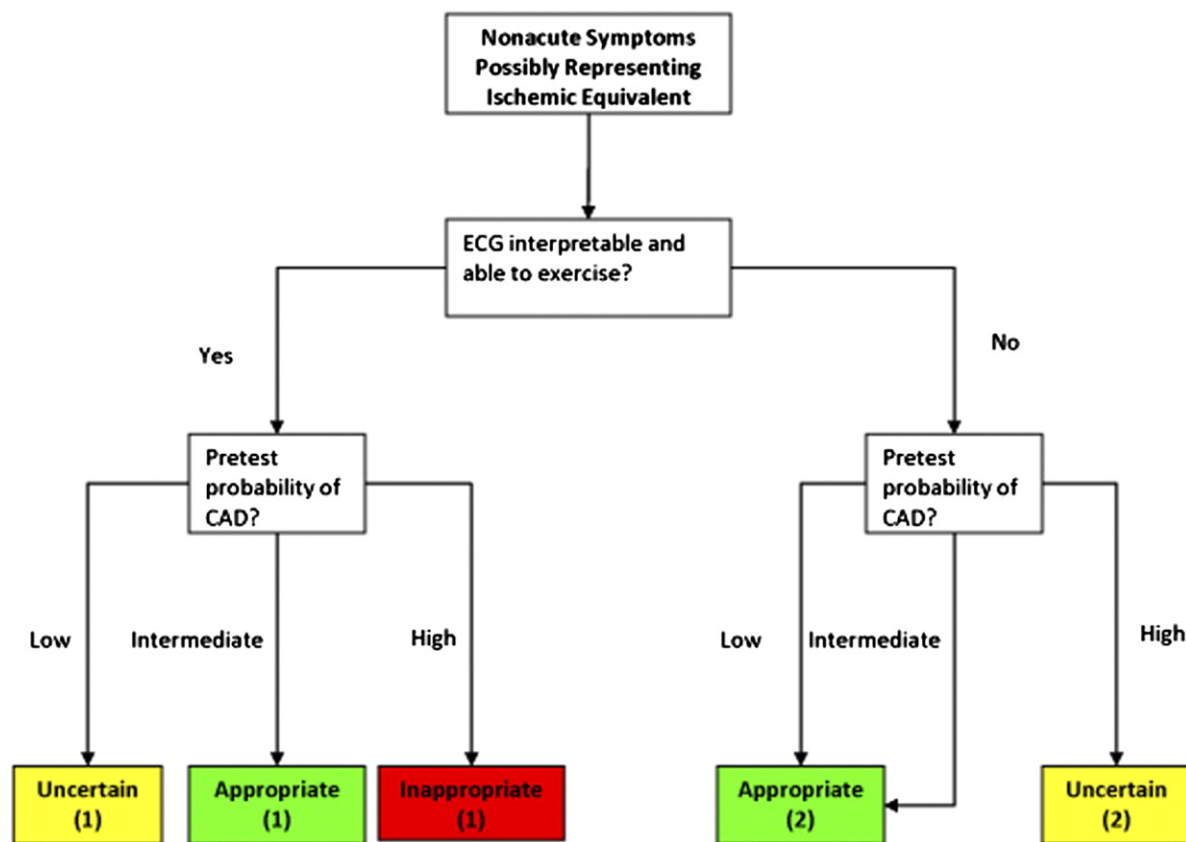


Figure 6 Detection of CAD in Symptomatic Patients Without Known Heart Disease Symptomatic—Nonacute Presentation.

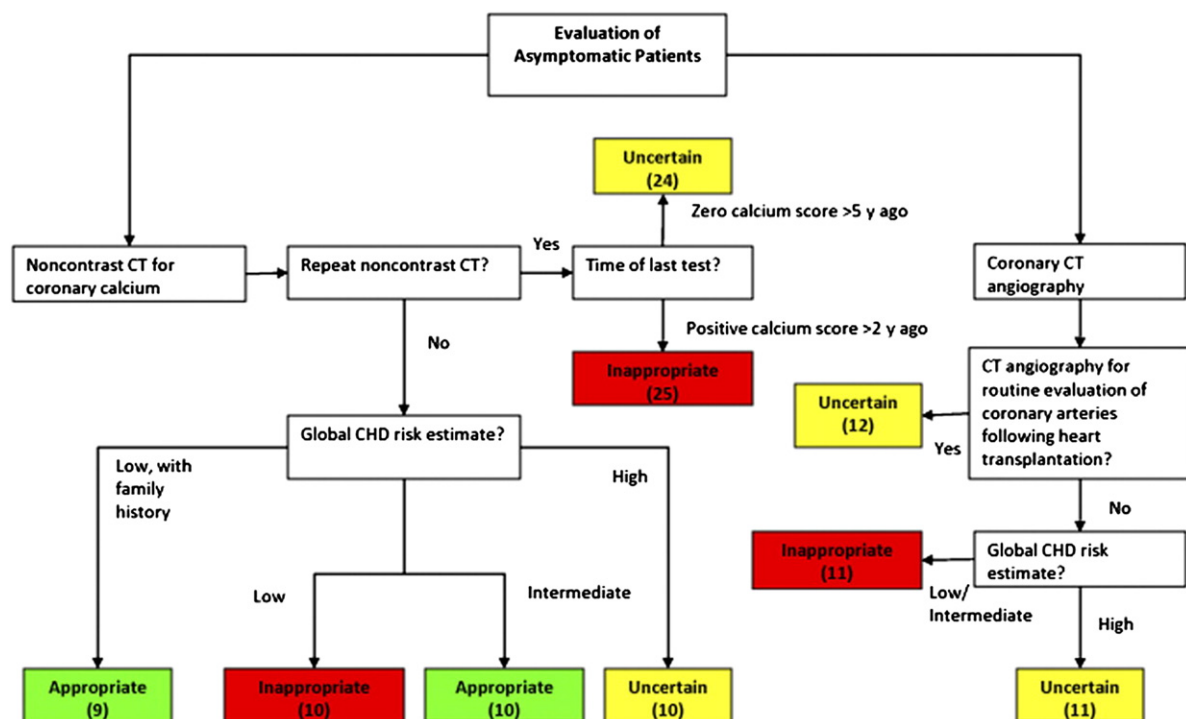


Figure 7 Detection of CAD/Risk Assessment in Asymptomatic Individuals Without Known Coronary Artery Disease.

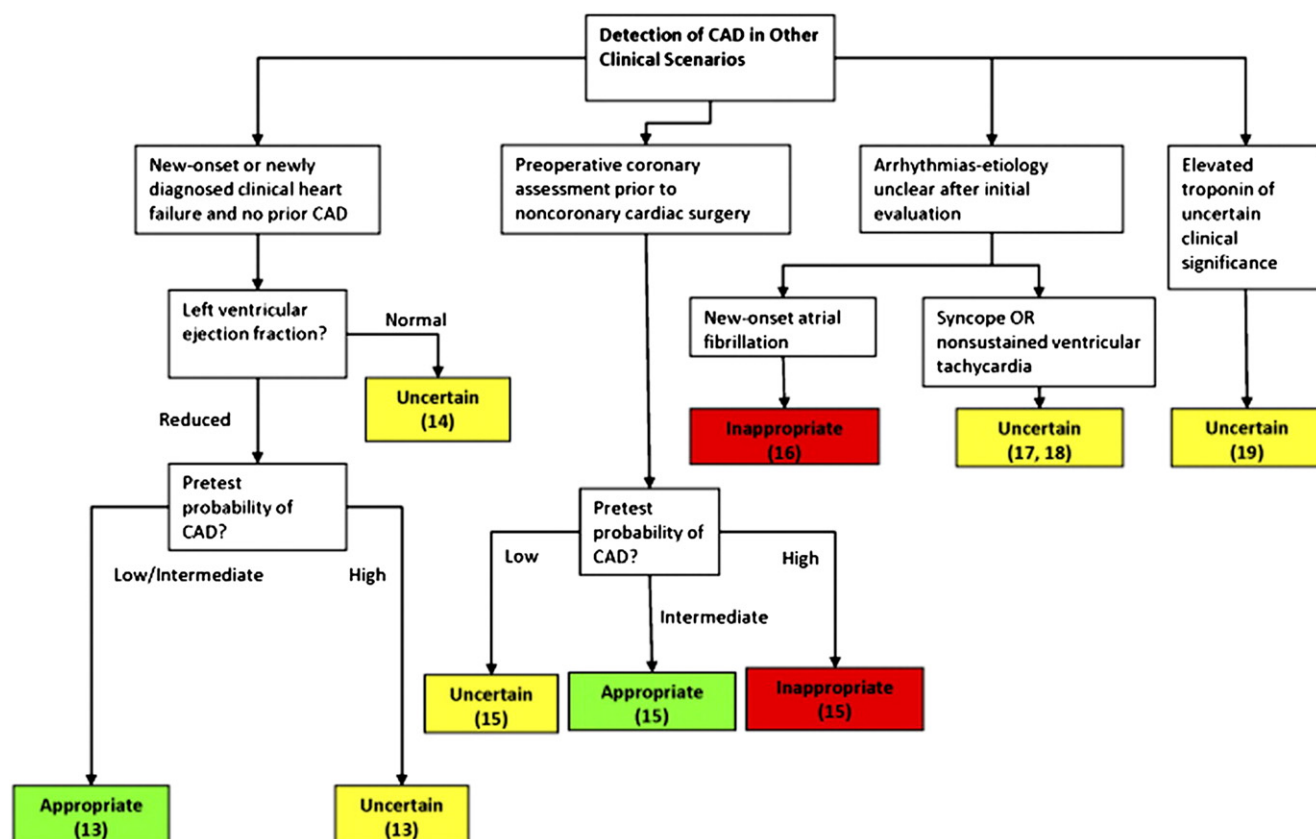


Figure 8 Detection of CAD in Other Clinical Scenarios.

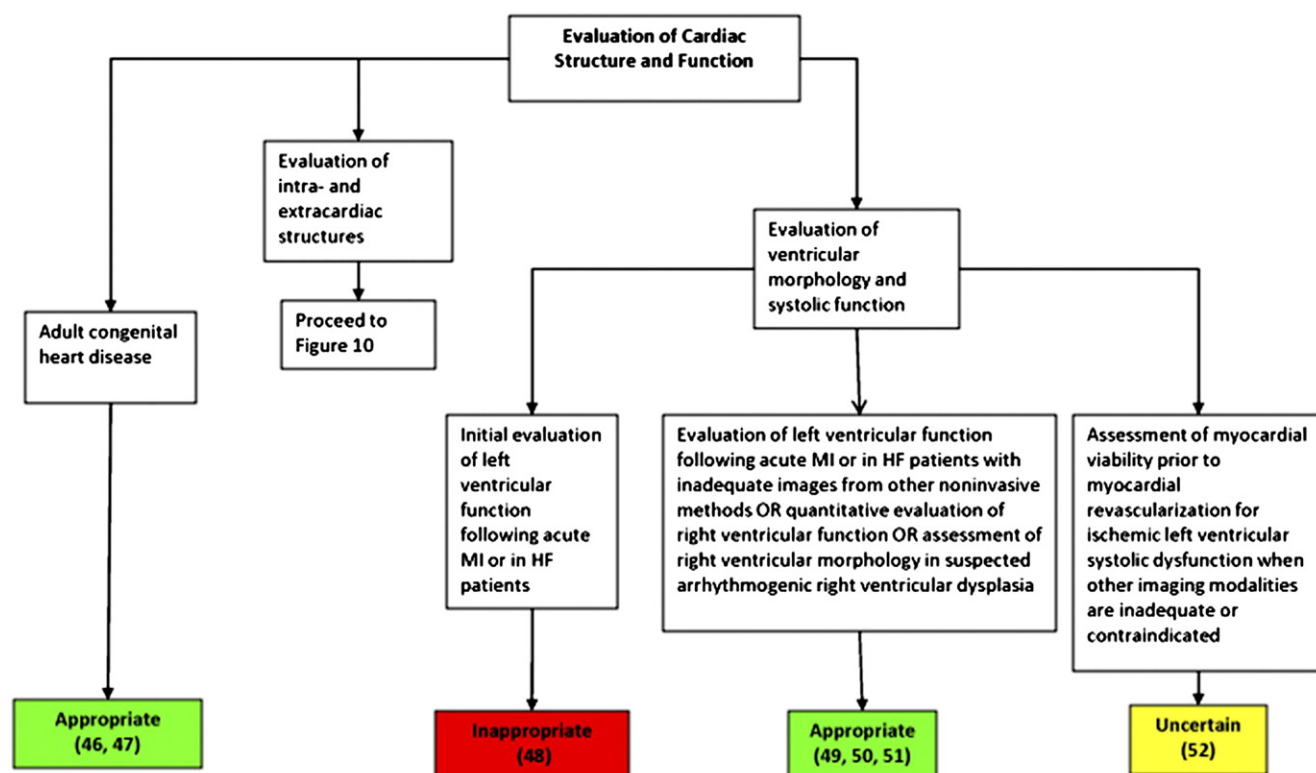


Figure 9 Evaluation of Cardiac Structure and Function.

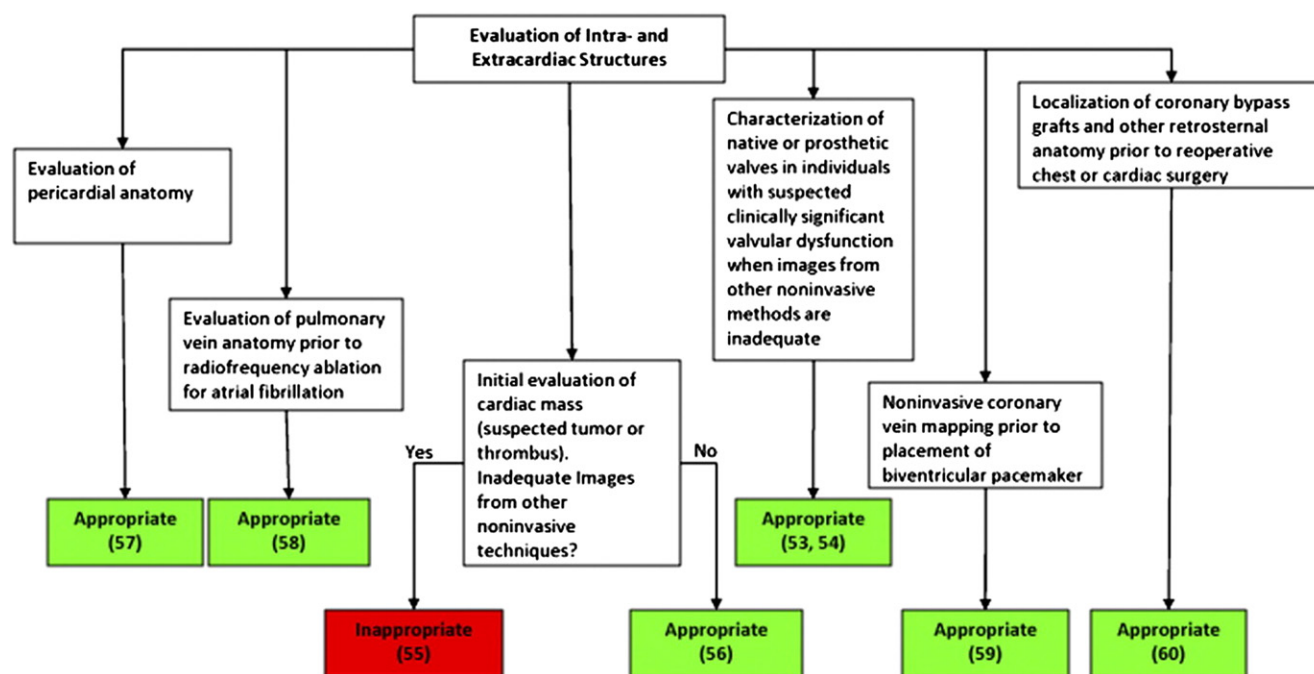


Figure 10 Evaluation of Cardiac Structure and Function: Evaluation of Intra- and Extracardiac Structures.

Discussion

Appropriate use criteria define common patient subgroups where expert opinion and the available medical evidence are combined to assess the net benefit of a test or procedure, in this instance CCT. The intent of these criteria is to guide the rational use of the procedure, namely avoidance of either under- or overutilization, and thereby lead to more optimal healthcare delivery and justifiable healthcare expenditures.

This document is an update to the original appropriateness criteria for CCT published in 2006 (1), written to reflect changes in test utilization in the context of rapidly developing technical and clinical applications and within the conceptual framework of dynamic appropriate use criteria development. Several aspects of the present document are noteworthy, including careful alignment to and, where possible, definition of language in the radionuclide imaging appropriate use criteria (2) to enhance integration into comparable decision support tools and performance metrics. The underlying assumptions for the document are intended to broadly reflect the present community standards of technology and performance of the technique with an emphasis on adherence to imaging guidelines, patient safety, and laboratory quality and accreditation.

The clinical scenarios included in this report were designed to reflect the most common and important potential applications for CCT imaging. After the initial writing by the writing group, extensive review from external editors, and then ranking by the technical panel itself, the result is a set of scenarios that define patient-specific applications. The appropriate use criteria in this report provide a consensus

judgment of whether it is reasonable to use CCT imaging for the particular clinical scenario described, such as those 93 indications listed in this document. These criteria are expected to be useful for clinicians, healthcare facilities, and third-party payers engaged in the delivery of cardiovascular imaging services. Although numerous, the indications are commonly divided among subclasses of patient CHD risk or pretest probability of CAD, as such characteristics are important considerations within the test performance characteristics. In total, 35 of 93 indications were judged to be appropriate, and 58 were judged to be either inappropriate or uncertain. It is important to note however, that an understanding of pretest patient characteristics is an important determinant of the appropriate use ratings. Few categories are uniform in the ratings for all patient characteristics.

Appropriate use criteria represent the first component of the chain of quality recommendations for cardiovascular imaging (15). In addition to appropriate use, patient safety also should be considered when ordering coronary computed tomographic angiography (CTA), as it should be when ordering any cardiac imaging test. A consideration of the appropriate balance of using radiation dose reduction techniques to minimize radiation exposure while preserving image quality and the related benefits of imaging for a specific patient should be undertaken. This issue is discussed in more depth in a 2010 expert consensus document on coronary CTA (16). The present document greatly expands the number of potential clinical scenarios in comparison to the original 2006 document. The clinical scenarios include acute and chronic chest pain, testing in symptomatic and asymptomatic patients, heart failure, preoperative risk assessment before both cardiac and noncardiac surgery,

testing in the setting of prior test results (exercise testing, stress imaging procedures, coronary calcium scores, and repeat testing), prior revascularization, and the evaluation of cardiac structure and function. Although these criteria are intended to provide guidance for patients and clinicians, they are not intended to serve as substitutes for sound clinical judgment and practice experience. The writing group recognizes that many patients encountered in clinical practice may not be represented in these appropriate use criteria or may have extenuating features when compared with the clinical scenarios presented. Although the appropriate use ratings reflect critical medical literature as well as expert consensus, physicians and other stakeholders should understand the role of clinical judgment in determining whether to order a test for an individual patient. Additionally, uncertain indications often require individual physician judgment and understanding of the patient to better determine the usefulness of a test for a particular scenario. As such, the ranking of an indication as uncertain (4 to 6) should not be viewed as limiting the use of CCT imaging for such patients. It should be emphasized that the technical panel was instructed that the uncertain designation was still designed to be considered as a “reimbursable” category.

These ratings are intended to evaluate the appropriate use of specific patient scenarios to determine overall **patterns of care** regarding CCT. In situations where there is substantial variation between the appropriate use rating and what the clinician believes is the best recommendation for the patient, further considerations or actions, such as a second opinion, may be appropriate. Moreover, it is not anticipated that all physicians or facilities will have 100% of their CCT procedures deemed appropriate. However, related to the overall patterns of care, if the national average of appropriate and uncertain ratings is 80%, for example, and a physician or facility has a 40% rate of inappropriate procedures, further examination of the patterns of care may be warranted and helpful. Implementation of these criteria is highly encouraged through provider education, as it is anticipated that increasing emphasis by laboratory accreditation bodies and other organizations focused on provider quality will apply.

Clinical Scenarios and Their Ratings

Direct comparison to the 2006 document is difficult because of the many changes in the number and wording of clinical scenarios. In summary:

- A total of 31 indications were carried forward from the 2006 document, including prior ratings where 10 were appropriate, 10 were uncertain, and 11 were inappropriate. Among these, 8 shifted up 1 category from either uncertain to appropriate (Indications 1 [intermediate], 6 [low], 10 [intermediate], 39, 49, 54) or from inappropriate to uncertain (Indications 2 [high], 42 [>5 y]). The other 23 indications had unchanged appropriate use ratings.
- One area of expansion compared with the 2006 criteria involves symptomatic patients without known heart disease. CCT was felt to be appropriate primarily for situations involving a low or intermediate pretest probability of obstructive CAD. Scenarios involving high-probability CAD patients were rated as uncertain with the exceptions of a patient with an interpretable ECG who was able to exercise, and for definite myocardial infarction.
- Noncontrast CT calcium scoring was judged as appropriate for intermediate CHD risk patients, and for the specific subset of low-risk patients in whom a family history of premature CHD was present. Intermediate risk was defined as a 10-year risk of between 10% and 20%, although individual patient exceptions to a broadened intermediate risk range of 6% to 20% were recognized for certain patient subsets with generally low absolute risk but high relative risk (younger men and women). Screening asymptomatic patients using coronary CT angiography was considered inappropriate, as was repeat coronary calcium testing. Repeat CT angiography in asymptomatic patients or patients with stable symptoms with prior test results was broadly considered inappropriate.
- Within heart failure, CT angiography was appropriate or uncertain as a test across both normal (new to this document) and abnormal left ventricular ejection fraction, although the only appropriate scenarios were with reduced left ventricular ejection fraction with low or intermediate pretest CAD probability.
- As part of the preoperative evaluation, CT angiography was viewed as a potential option among patients undergoing heart surgery for noncoronary indications (e.g., valve replacement surgery or atrial septal defect closure) when the pretest CAD risk was either intermediate (appropriate) or low (uncertain). In comparison, there were no appropriate indications for coronary CT angiography as part of the preoperative evaluation for noncardiac surgery.
- The evaluation of coronary stents was considered as a function of patient symptom status, time from revascularization, and stent size. Only with larger stents (≥ 3 mm in diameter) after long time periods (≥ 2 years) was stent imaging considered uncertain, and only with left main stents was imaging of stents considered appropriate.
- A strength of cardiac CT imaging is the evaluation of cardiac structure and function. Appropriate indications include coronary anomalies, congenital heart disease, evaluation of right ventricular function, evaluation of left ventricular ejection fraction when images from other techniques are inadequate, or evaluation of prosthetic heart valves. New to this document is the use of CCT for evaluation of myocardial viability when other modalities are inadequate or contraindicated (uncertain), and in suspected arrhythmogenic right ventricular dysplasia (appropriate).

- The use of CCT was appropriate prior to electrophysiological procedures for anatomic mapping, or prior to repeat sternotomy in reoperative cardiac surgery.
- There was disagreement on the panel in 2 of the clinical scenarios: 1) detection of CAD in the setting of a low pretest probability for CAD when the ECG is interpretable and the patient is able to exercise (Indication 1); and 2) preoperative coronary assessment prior to non-coronary cardiac surgery in the setting of a low pretest probability for CAD (Indication 30). Both of these indications were ranked in the uncertain category.

Application of Criteria

There are many potential applications for appropriate use criteria. Clinicians could use the ratings for decision support or an educational tool when considering the need for CCT imaging. Moreover, these criteria could be used to facilitate discussion with patients and/or referring physicians about the need for CCT imaging. Facilities and payers

may choose to use these criteria either prospectively in the design of protocols and preauthorization procedures, or retrospectively for quality reports. It is hoped that payers would use these criteria as the basis for the development of rational payment management strategies.

These criteria were developed with the intent that they be considered in both the delivery and in the policy positions for these services, including reimbursement. In contrast, services performed for inappropriate indications should likely require additional documentation to justify reimbursement because of the unique circumstances or the clinical profile that must exist in such a patient. It is critical to emphasize that the writing group, technical panel, Appropriate Use Criteria Task Force, and clinical community do not believe an uncertain rating is grounds to deny reimbursement for CCT imaging. Rather, uncertain ratings are those where expert opinion or the available data vary or are rapidly evolving. The opinions of the technical panel often varied for these indications reflecting that additional research is needed. By the same right, appropriate

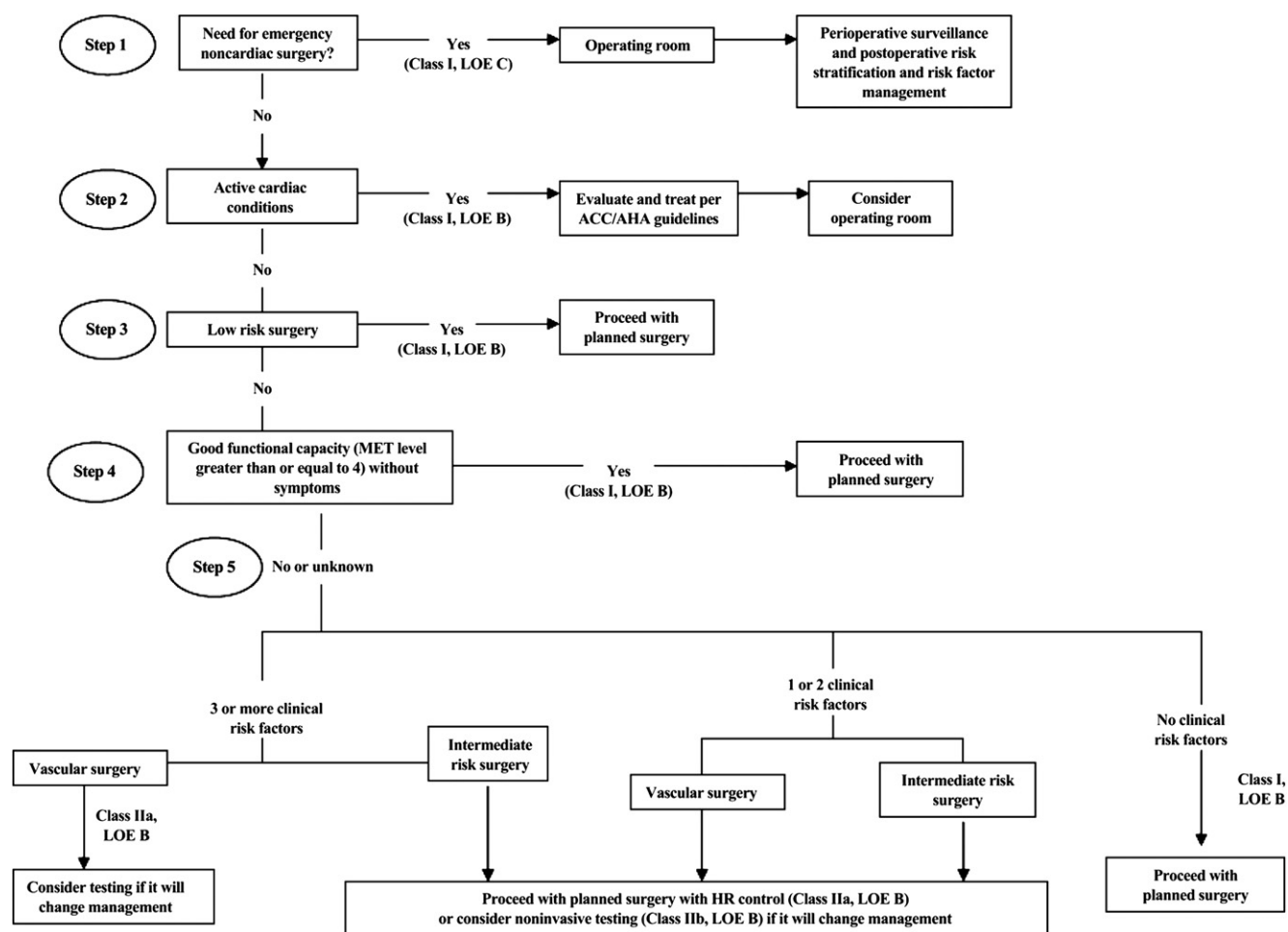


Figure A1 Stepwise Approach to Perioperative Cardiac Assessment.

Cardiac evaluation and care algorithm for noncardiac surgery based on active clinical conditions, known cardiovascular disease, or cardiac risk factors for patients ≥ 50 years of age. HR indicates heart rate; LOE, level of evidence; and MET, metabolic equivalent. Modified from Fleisher (19).

indications may still benefit from further clinical trials and evidence development.

In conclusion, this document represents the current understanding of the net clinical benefit of CCT imaging with respect to the balance between benefit and risk to the patient as assessed under the ACCF's appropriate use criteria methodology. It is intended to provide a practical guide and perspective to clinicians and patients when considering CCT imaging and promote more appropriate test utilization including avoidance of either under- or overutilization. As with other appropriate use criteria, some of these ratings will require research and further evaluation to provide the greatest information and benefit to clinical decision making. Finally, it will be necessary to periodically assess and update the indications and criteria as technology evolves and new data and field experience become available.

Appendix A. Additional Cardiac Computed Tomography Definitions

Angina: As defined by the ACC/AHA Guidelines on Exercise Testing (9)

- **Typical Angina (Definite):** 1. Substernal chest pain, or an ischemic equivalent discomfort that is:
 - a. provoked by exertion or emotional stress and
 - b. relieved by rest and/or nitroglycerin (17).
- **Atypical Angina (Probable):** Chest pain or discomfort with two characteristics of definite or typical angina (17).
- **Nonanginal Chest Pain:** Chest pain or discomfort that meets one or none of the typical angina characteristics (17).

Acute Coronary Syndrome: As defined by the ACC/AHA Guidelines for the Management of Patients With ST-Elevation Myocardial Infarction, patients with an acute coronary syndrome include those whose clinical presentations cover the following range of diagnoses: unstable angina, MI without ST-elevation (NSTEMI), and myocardial infarction with ST-elevation (STEMI) (18).

Evaluating Perioperative Risk for Noncardiac Surgery METHOD FOR DETERMINING PERIOPERATIVE RISK

Review Figure A1, “**Stepwise Approach to Perioperative Cardiac Assessment**,” from the ACC/AHA 2009 Perioperative Guidelines (19). Based on the algorithm, once it is determined that the patient does not require urgent surgery, the clinician should determine the patient's active cardiac conditions and/or perioperative risk predictors—see definitions in the following text. If any active cardiac conditions (Table A1) and/or major risk predictors (Table A2) are present, Figure A1 suggests consideration of coronary angiography and postponing or canceling noncardiac surgery. Once perioperative risk predictors are assessed based on the algorithm, then the surgical risk and patient's functional status should be used to establish the need for noninvasive testing.

ECG—Uninterpretable: Refers to electrocardiograms with resting ST-segment depression (≥ 0.10 mV), complete left bundle-branch block, pre-excitation (Wolff-Parkinson-White syndrome), or paced rhythm.

Able to Exercise: Able to complete a diagnostic exercise treadmill examination.

Table A1 Active Cardiac Conditions for Which the Patient Should Undergo Evaluation and Treatment Before Noncardiac Surgery (Class I, Level of Evidence: B)

Condition	Examples
Unstable coronary syndromes	Unstable or severe angina* (CCS class III or IV) [†] Recent MI [‡]
Decompensated HF (NYHA functional class IV; worsening or new-onset HF)	
Significant arrhythmias	High-grade atrioventricular block Mobitz II atrioventricular block Third-degree atrioventricular heart block Symptomatic ventricular arrhythmias Supraventricular arrhythmias (including atrial fibrillation) with uncontrolled ventricular rate (HR >100 bpm at rest) Symptomatic bradycardia Newly recognized ventricular tachycardia
Severe valvular disease	Severe aortic stenosis (mean pressure gradient >40 mm Hg, aortic valve area <1.0 cm ² , or symptomatic) Symptomatic mitral stenosis (progressive dyspnea on exertion, exertional presyncope, or HF)

CCS indicates Canadian Cardiovascular Society; HF, heart failure; HR, heart rate; MI, myocardial infarction; and NYHA, New York Heart Association.

*According to Campeau (20).

[†]May include “stable” angina in patients who are unusually sedentary.

[‡]The American College of Cardiology National Database Library defines recent MI as >7 days but ≤1 month (within 30 days). Reprinted from Fleisher (19).

Table A2 Perioperative Clinical Risk Factors*

- History of ischemic heart disease
- History of compensated or prior heart failure
- History of cerebrovascular disease
- Diabetes mellitus (requiring insulin)
- Renal insufficiency (creatinine <2.0)

*As defined by the ACCF/AHA guidelines on perioperative cardiovascular evaluation and care for noncardiac surgery (1). Note that these are not standard coronary artery disease risk factors.

Appendix B. Additional Methods

See the Methods section for a description of panel selection, indication development, scope of indications, and rating process.

Relationships With Industry and Other Entities

A list of all individuals participating in the development and review of this document and their institutional and/or organizational affiliations is presented in [Appendix C](#). The ACCF and its partnering organizations rigorously avoid any actual, perceived, or potential conflicts of interest that might arise as a result of an outside relationship or personal interest of a member of the technical panel. Specifically, all panel members are asked to provide disclosure statements of all relationships that might be perceived as real or potential conflicts of interest. These statements were reviewed by the Appropriate Use Criteria Task Force, discussed with all members of the technical panel at the face-to-face meeting, and updated and reviewed as necessary. A table of disclosures by the technical panel and oversight task force members can be found in [Appendix D](#).

Literature Review

The technical panel members were asked to refer to the relevant literature provided for each indication table when completing their ratings (Online Appendix at <http://content.onlinejacc.org/cgi/content/full/j.jacc.2010.07.005/DC1>).

Appendix C. ACCF/SCCT/ACR/AHA/ASE/ASNC/NASCI/SCAI/SCMR 2010 Appropriate Use Criteria for Cardiac Computed Tomography Participants

Cardiac Computed Tomography Writing Group

Allen J. Taylor, MD, FACC, FAHA—Chair, Appropriate Use Criteria for Cardiac Computed Tomography Writing Group, Co-Director Noninvasive Imaging, Washington Hospital Center, Washington, DC

Manuel Cerqueira, MD, FACC, FASNC—Chairman of Molecular and Functional Imaging, Cleveland Clinic Foundation, Cleveland, OH

John McB. Hodgson, MD, FACC, FSCAI—Chairman, Department of Cardiology Geisinger Health System, Danville, PA

Daniel Mark, MD, MPH, FACC, FAHA—Professor of Medicine, Duke Clinical Research Institute, Duke University, Durham, NC

James Min, MD, FACC—Assistant Professor of Medicine, Weil Cornell Medical College, New York, NY

Patrick O'Gara, MD, FACC, FAHA—Associate Professor of Medicine, Harvard University School of Medicine, Director of Clinical Cardiology, Brigham & Women's Hospital, Boston, MA

Geoffrey D. Rubin, MD, FSCBTMR—Professor of Radiology, Associate Dean for Clinical Affairs, Chief of Cardiovascular Imaging, Stanford University School of Medicine, Palo Alto, CA

Cardiac Computed Tomography Technical Panel

Christopher M. Kramer, MD, FACC, FAHA—Moderator of the Technical Panel, Professor of Radiology and Medicine, and Director, Cardiovascular Imaging Center, University of Virginia Health System, Charlottesville, VA

Allen J. Taylor, MD, FACC, FAHA—Writing Group Liaison, Appropriate Use Criteria for Cardiac Computed Tomography Technical Panel, Co-Director of Noninvasive Imaging, Washington Hospital Center, Washington, DC

Daniel Berman, MD, FACC—Director of Cardiac Imaging, Cedars-Sinai Medical Center Department of Imaging, Los Angeles, CA

Alan Brown, MD, FACC, FAHA, FNLA—Clinical Associate Professor of Medicine, Loyola Stritch School of Medicine, Maywood, IL; Medical Director of Midwest Heart Disease Prevention Center, Midwest Heart Specialists, Edward Heart Hospital, Naperville, IL

Farooq A. Chaudhry, MD, FACC, FAHA, FASE—Associate Professor of Medicine, Columbia University College of Physicians and Surgeons, Associate Chief of Cardiology, Director of Echocardiography, New York, NY

Ricardo C. Cury, MD—Director of Cardiac Imaging, Baptist Hospital of Miami and Baptist Cardiac and Vascular Institute, Miami, FL

Milind Y. Desai, MD, FACC—Cardiologist, Section of Cardiovascular Imaging, Cleveland Clinic, Cleveland, OH

Andrew J. Einstein, MD, PhD, FACC, FAHA, FASNC—Assistant Professor of Clinical Medicine, Director, Cardiac CT Research, Co-Director, Cardiac CT and MRI, Columbia University, New York, NY

Antoinette S. Gomes, MD, FAHA, FSIR—Professor of Radiology and Medicine, David Geffen School of Medicine at UCLA, Los Angeles, CA

Robert Harrington, MD, FACC, FAHA, FSCAI—Professor of Medicine, Duke University, Director of Duke Clinical Research Institute, Durham, NC

Udo Hoffmann, MD, MPH—Director of Cardiac MR, PET, and CT program, Massachusetts General Hospital, Boston, MA

Rahul Khare, MD—Instructor, Department of Emergency Medicine, Northwestern University, Feinberg School of Medicine, Chicago, IL

John Lesser, MD, FACC—Director of Cardiovascular CT and MRI, Minneapolis Heart Institute, Minneapolis, MN

Christopher McGann, MD, FACC—Associate Professor of Medicine, Division of Cardiology, University of Utah Medical Center, Salt Lake City, UT

Alan Rosenberg, MD, FACC—Vice President of Medical Policy and Credentialing Programs, WellPoint, Inc., Chicago, IL

Robert Schwartz, MD, FACC—Cardiologist, Minneapolis Heart Institute, Minneapolis, MN

Marc Shelton, MD, FACC—President, Prairie Cardiovascular Consultants, Ltd., Springfield, IL

Gerald W. Smetana, MD—Associate Professor of Medicine, Harvard University School of Medicine, Internal Medicine Physician, Division of General Medicine & Primary Care, Beth Israel Deaconess Medical Center, Boston, MA

Sidney C. Smith, Jr., MD, FACC, FAHA—Professor of Medicine, Director of Center for Cardiovascular Science and Medicine, University of North Carolina, Chapel Hill, NC

External Reviewers of the Appropriate Use Criteria Indications

Michael Atalay, MD, PhD, FACC—Director Cardiac MRI and CT, Assistant Professor of Diagnostic Imaging and Cardiology Warren Alpert School of Medicine at Brown University, Rhode Island Hospital, Providence, RI

Matthew Budoff, MD, FACC—Program Director, Division of Cardiology, Los Angeles Biomedical Research Institute, Torrance, CA

Tracy Callister, MD, FACC—Director, Tennessee Heart and Vascular Institute, Hendersonville, TN

Jeffrey Carr, MD, FACC—Cardiologist, Cardiovascular Associates of East Texas, PA, Tyler, TX

Su Min Chang, MD, FACC—Assistant Professor of Medicine, Weill Cornell Medical College, Associate Director of the Cardiac Computed Tomography Laboratory—The Methodist DeBakey Heart & Vascular Center, Houston, TX

Benjamin Cheong, MD, FACC—Attending Physician, Clinical Director, Cardiovascular MR and CT, St. Luke's Episcopal Health System/The Texas Heart Institute, Houston, TX

Kavitha Chinnaiyan, MD, FACC—Director, Cardiovascular Imaging Education, William Beaumont Hospital, Royal Oak, MI

Philip Costello, MD—Chair of Radiology, Medical University of South Carolina, Charleston, SC

E. Gordon DePuey, MD, FACC—Director of Nuclear Medicine, St. Luke's-Roosevelt Hospital Professor of Radiology, Columbia University, New York, NY

Andrew J. Einstein, MD, PhD, FACC, FAHA, FASNC—Assistant Professor of Clinical Medicine, Director, Cardiac CT Research, Co-Director, Cardiac CT and MRI, Columbia University, New York, NY

Lee Fleisher, MD, FACC—Professor of Anesthesiology, University of Pennsylvania Department of Anesthesiology, Philadelphia, PA

Mario Garcia, MD, FACC—Director of Cardiovascular Imaging, Mount Sinai Hospital Cardiovascular Institute, New York, NY

Thomas Gerber, MD, FACC—Professor of Radiology and Medicine, Jacksonville, FL

Raymond Gibbons, MD, FACC—Professor of Medicine, Co-Director of Nuclear Cardiology Lab, Mayo Clinic, Rochester, MN

Harvey Hecht, MD, FACC, FSCCT—Director of Cardiovascular CT, Lenox Hill Heart and Vascular Institute of New York, New York, NY

Milena Henzlova, MD, FACC—Director of Nuclear Cardiology, Mount Sinai Medical Center, New York, NY

Jill Jacobs, MD—Associate Professor of Radiology, Chief of Cardiac Imaging, NYU Langone Medical Center, New York, NY

Scott Jerome, DO, FACC—Assistant Professor of Medicine, Cardiology Division, University of Maryland Medical Center, Finksburg, MD

Norman Kato, MD, FACC—Cardiothoracic Surgeon, Cardiac Care Medical Group, Encino, CA

Richard Kovacs, MD, FACC—Professor of Clinical Medicine, Krannert Institute of Cardiology, Indianapolis, IN

Michael Lauer, MD, FACC—Director, Division of Cardiovascular Sciences, National Heart, Lung, and Blood Institute, Bethesda, MD

John Mahmarian, MD, FACC—Professor of Medicine, The Methodist Hospital Organization, Houston, TX

David Malenka, MD—Professor of Medicine, Dartmouth Hitchcock Medical Center Section of Cardiology, Lebanon, NH

Frederick A. Masoudi, MD, MSPH, FACC, FAHA—Associate Professor of Medicine, Denver Health Center, Denver, CO

Julie Miller, MD, FACC—Assistant Professor of Medicine, Johns Hopkins University, Baltimore, MD

Debabrata Mukherjee, MD, FACC—Chief, Cardiovascular Medicine, Professor of Medicine, Texas Tech University, El Paso, TX

Meagan Murphy, MD—Internist, Massachusetts General Hospital, Boston, MA

Jagat Narula, MD, FACC—Professor of Medicine, Chief of Division of Cardiology, University of California, Irvine, Orange, CA

John Nixon, MD, FACC, FAHA—Professor of Medicine, Medical College of Virginia, Richmond, VA

E. Magnus Ohman, MD, FACC—Professor of Medicine, Duke University Medical Center; Associate Director, Duke Heart Center-Ambulatory Care; Director, Program for Advanced Coronary Disease, Duke Clinical Research Institute, Durham, NC

Michael H. Picard, MD, FACC, FAHA, FASE—Director of Echocardiography, Massachusetts General Hospital, Boston, MA

Michael Poon, MD, FACC—Professor of Medicine and Radiology, Stony Brook School of Medicine, Stony Brook, NY

Miguel Quinones, MD, FACC—Professor of Medicine, Weill Cornell Medical College; Chairman, Department of Cardiology, The Methodist Hospital Physician Organization, Houston, TX

Daniel Rader, MD—Cooper-McClure Professor of Medicine, Director of Preventive Cardiovascular Medicine and Lipid Clinic, University of Pennsylvania, Philadelphia, PA

Rita Redberg, MD, FACC—Professor of Medicine, University of California San Francisco, San Francisco, CA

U. Joseph Schoepf, MD, FAHA, FSCBT-MR, FSCCT—Professor of Radiology and Medicine, Director of Cardiovascular Imaging, Medical University of South Carolina, Charleston, SC

Samuel Wann, MD—Cardiologist, Wheaton Franciscan Medical Group, Wauwatosa, WI

William Guy Weigold, MD, FACC—Director of CT, Washington Hospital Center, Washington, DC

Jonathan Weinsaft, MD, FACC—Director of Cardiac MRI Program, New York Presbyterian Hospital, Cornell Medical Center, New York, NY

William Weintraub, MD, FACC—Chief of Cardiology, Christiana Care Health System, Newark, DE

Kim Allan Williams, MD, FACC, FAHA, FASNC—Chair, Division of Cardiology, Wayne State University School of Medicine, Detroit, MI

ACCF Appropriate Use Criteria Task Force

Michael J. Wolk, MD, MACC—Chair, Task Force, Past President, American College of Cardiology Foundation and Clinical Professor of Medicine, Weill-Cornell Medical School, New York, NY

Steven Bailey, MD, FACC, FSCAI—Chair, Division of Cardiology, Professor of Medicine and Radiology, Janey Briscoe Distinguished Chair, University of Texas Health Sciences Center, San Antonio, TX

Pamela S. Douglas, MD, MACC, FAHA, FASE—Past President, American College of Cardiology Foundation; Past President, American Society of Echocardiography; and Ursula Geller Professor of Research in Cardiovascular Diseases and Chief, Cardiovascular Disease, Duke University Medical Center, Durham, NC

Robert C. Hendel, MD, FACC, FAHA, FASNC—Chair, Appropriate Use Criteria for Radionuclide Imaging Writing Group—Director of Cardiac Imaging and Outpatient Services, Division of Cardiology, Miami University School of Medicine, Miami, FL

Christopher M. Kramer, MD, FACC, FAHA—Professor of Medicine and Radiology and Director, Cardiovascular Imaging Center, University of Virginia Health System, Charlottesville, VA

James Min, MD, FACC—Assistant Professor of Medicine, Weill Cornell Medical College, New York, NY

Manesh R. Patel, MD, FACC—Assistant Professor of Medicine, Division of Cardiology, Duke University Medical Center, Durham, NC

Leslee Shaw, PhD, FACC, FASNC—Professor of Medicine, Emory University School of Medicine, Atlanta, GA

Raymond F. Stainback, MD, FACC, FASE—Medical Director of Noninvasive Cardiac Imaging, Texas Heart Institute at St. Luke's Episcopal Hospital, Houston, TX; Clinical Associate Professor of Medicine, Baylor College of Medicine; President-Elect, Intersocietal Commission for the Accreditation of Echocardiography Laboratories (ICAEL); Hall-Garcia Cardiology Associates, Houston, TX

Joseph M. Allen, MA—Director, TRIP (Translating Research into Practice), American College of Cardiology Foundation, Washington, DC

Appendix D. ACCF/SCCT/ACR/AHA/ASE/ASNC/NASCI/SCAI/SCMR 2010 Cardiac Computed Tomography Appropriate use Criteria Writing Group, Technical Panel, Task Force, and Indication Reviewers—Relationships with Industry and Other Entities (in Alphabetical Order)

Committee Member	Research Grant	Speaker	Stock Ownership	Salary	Board of Directors	Consulting Fees/ Honoraria	Expert Witness
Cardiac Computed Tomography Use Criteria Writing Group							
Manuel Cerqueira	• Perceptive Informatics, Inc.	• Astellas • GE Healthcare	None	None	None	• Astellas • GE Healthcare • MDS Nordion • Siemens • Volcano Corp	None
John McB. Hodgson	• Boston Scientific • RADI • Volcano Corp	None	• Guardian VPM	None	None		• Myocardial infarct • Review of care delivered to patient with prosthetic valve endocarditis
Daniel Mark	None	None	None	None	None	None	None
James Min	None	• GE Healthcare	None	None	None	None	None
Patrick O’Gara	• Lantheus	None	None	None	None	None	None
Geoffery D. Rubin	None	None	• Terarecon	None	None	• Fovia • Medtronic • Trivascular 2 • Abbott	None
Allen J. Taylor	• Abbott • Resverlogix	None	None	None	None		None
Cardiac Computed Tomography Appropriate Use Criteria Technical Panel							
Daniel Berman	• Siemens • GE/Amersham • Astellas • Lantheus	None	None	None	None	• Astellas • Bracco • Cedars Sinai Medical Center-software royalties • Floura Pharma • Lantheus • Magellan • Spectrum Dynamics • AstraZeneca • Merck • Merck/Schering-Plough • Pfizer • Reliant	None
Alan Brown	None	None	None	None	None		None
Farooq A. Chaudhry	• Lantheus	• Lantheus	None	None	None	None	None

(continued on next page)

Appendix D. (continued)

Committee Member	Research Grant	Speaker	Stock Ownership	Salary	Board of Directors	Consulting Fees/ Honoraria	Expert Witness
Ricardo C. Cury	<ul style="list-style-type: none"> • Astellas Pharma • Pfizer Inc. 	None	None	None	<ul style="list-style-type: none"> • Society of Cardio-vascular Computed Tomography 	<ul style="list-style-type: none"> • Astellas Pharma 	None
Milind Y. Desai	None	<ul style="list-style-type: none"> • Philips 	None	None	None	None	None
Andrew J. Einstein	<ul style="list-style-type: none"> • Spectrum Dynamics 	None	None	None	None	None	None
Antoinette S. Gomes	None	None	None	None	None	None	None
Robert Harrington	<ul style="list-style-type: none"> • AstraZeneca • Bristol-Myers Squibb • GlaxoSmithKline • Merck • Millenium • Portola • Schering-Plough • The Medicines Company 	None	None	None	None	<ul style="list-style-type: none"> • AstraZeneca • Baxter • CSL Behring • Eli Lilly • Heart.org • Luitpold • Merck • Novartis • Otsuka Maryland Research Institute • Regado • Schering-Plough • WebMD 	None
Udo Hoffmann	None	None	None	None	None	None	None
Rahul Khare	None	None	None	None	None	None	None
Christopher M. Kramer	<ul style="list-style-type: none"> • Astellas • GlaxoSmithKline • Siemens 	None	None	None	None	None	None
John Lesser	None	<ul style="list-style-type: none"> • Siemens Medical Systems 	None	None	None	<ul style="list-style-type: none"> • Vital Images 	None
Christopher McGann	None	None	None	None	None	None	None
Alan Rosenberg	None	None	None	<ul style="list-style-type: none"> • WellPoint Inc. 	None	None	None
Robert Schwartz	None	None	None	None	None	None	None
Marc Shelton	None	None	None	None	None	None	None
Gerald W. Smetana	None	None	<ul style="list-style-type: none"> • Anvita Health 	None	None	None	None
Sidney C. Smith, Jr.	None	None	None	None	None	None	None
Allen J. Taylor	<ul style="list-style-type: none"> • Abbott • Resverlogix 	None	None	None	None	<ul style="list-style-type: none"> • Abbott 	None

Cardiac Computed Tomography Appropriate Use Criteria Task Force

Joseph M. Allen	None	None	None	None	None	None	None
Steven Bailey	<ul style="list-style-type: none"> • Boston Scientific Corporation 	None	None	None	None	<ul style="list-style-type: none"> • Volcano 	None
Pamela S. Douglas	<ul style="list-style-type: none"> • Abiomed • Amgen • Atritech • Edwards Lifesciences • MAP Pharmaceuticals • Medtronic • Osiris • Viacor 	None	<ul style="list-style-type: none"> • Cardio DX • Elsevier 	None	<ul style="list-style-type: none"> • Translational Research in Oncology 	<ul style="list-style-type: none"> • 23andME • BG Medicine • CancerGuideDX • Heart.org • Institute of Medicine • National Institutes of Health • Novartis • Pappas Ventures • Veterans Administration • WebMD • Xceed Molecular • PHx Health • United Healthcare 	None
Robert C. Hendel	<ul style="list-style-type: none"> • GE Healthcare 	<ul style="list-style-type: none"> • Astellas 	None	None	None	None	None
Christopher M. Kramer	<ul style="list-style-type: none"> • Astellas • GlaxoSmithKline • Siemens 	None	None	None	None	None	None
James Min	None	<ul style="list-style-type: none"> • GE Healthcare 	None	None	None	None	None
Manesh R. Patel	<ul style="list-style-type: none"> • Genzyme 	None	None	None	None	None	None
Leslee Shaw	<ul style="list-style-type: none"> • Astellas • Bracco Diagnostics 	None	None	None	None	None	None
Raymond F. Stainback	None	None	None	None	None	None	None
Michael J. Wolk	None	None	None	None	None	None	None

Cardiac Computed Tomography Appropriate Use Criteria Indication Reviewers

Michael Atalay	None	None	None	None	None	None	None
Matthew Budoff	None	<ul style="list-style-type: none"> • General Electric 	None	None	None	None	<ul style="list-style-type: none"> • CT scanning
Tracy Callister	None	<ul style="list-style-type: none"> • GE Healthcare 	None	None	None	None	None
Jefferey Carr	None	None	None	None	None	None	None
Su Min Chang	<ul style="list-style-type: none"> • Lantheus Imaging 	None	None	None	None	None	None
Benjamin Cheong	<ul style="list-style-type: none"> • Bracco Inc. • St. Jude Medical 	None	None	None	None	None	None
Kavitha Chinnaiyan	<ul style="list-style-type: none"> • Bayer Healthcare 	None	None	None	None	None	None
Philip Costello	None	None	None	None	None	None	None
E. Gordon DePuey	None	None	None	None	None	None	None
Andrew J. Einstein	<ul style="list-style-type: none"> • Spectrum Dynamics 	None	None	None	None	None	None

(continued on next page)

Appendix D. (continued)

Committee Member	Research Grant	Speaker	Stock Ownership	Salary	Board of Directors	Consulting Fees/ Honoraria	Expert Witness
Lee Fleisher	None	None	None	None	None	• AstraZeneca	• Preoperative stroke
Mario Garcia	• Spectrum Dynamics	None	• Pfizer	None	• Intersocietal Accreditation Council	• BG Medicine • MD Imaging • TheHeart.org	None
Thomas Gerber	None	None	None	None	None	None	None
Raymond Gibbons	• Velomedix	None	None	None	None	• Cardiovascular Clinical Studies (Women Study) • Lantheus Medical Imaging • Medscape (Heart.org) • Molecular Insight Pharmaceuticals • TherOx	None
Harvey Hecht	• Philips Medical Systems	• Philips Medical Systems	None	None	None	None	None
Milena Henzlova	None	None	• Astellas	None	None	None	None
Jill Jacobs	• Siemens Medical	• GE Healthcare	None	None	None	None	None
Scott Jerome	• Astellas	• Astellas	None	None	None	None	None
Norman Kato	None	None	None	None	None	None	None
Richard Kovacs	None	None	None	None	None	• Abbott • BG Medicine • Biomedical Systems • Cook Inc-Med Institute • ECG Scanning Services • Eli Lilly • Endocyte • Essentialis • XenoPort	None
Michael Lauer	None	None	None	None	None	None	None
John Mahmarian	None	None	None	None	None	None	None
David Malenka	• Abbott Vascular • St. Jude Medical Foundation	None	None	None	None	None	None

Frederick A. Masoudi	None	None	None	<ul style="list-style-type: none"> American College of Cardiology Oklahoma Foundation for Medical Quality 	None	<ul style="list-style-type: none"> United Healthcare (previous) 	None
Julie Miller	<ul style="list-style-type: none"> Toshiba Medical Systems 	None	None	None	None	None	None
Debabrata Mukherjee	None	None	None	None	None	None	None
Meagan Murphy	None	None	None	None	None	None	None
Jagat Narula	None	None	None	None	None	None	None
John Nixon	None	None	None	None	None	None	None
E. Magnus Ohman	<ul style="list-style-type: none"> Bristol-Myers Squibb CV Therapeutics Daiichi Sankyo Datascope Eli Lilly Sanofi-Aventis Schering-Plough The Medicines Company 	<ul style="list-style-type: none"> Gilead Sciences 	None	None	None	<ul style="list-style-type: none"> Abiomed AstraZeneca CV Therapeutics Datascope Gilead Sciences Liposcience Northpoint Domain Pozen, Inc. Response Biomedical The Medicines Company WebMD 	None
Michael H. Picard	None	None	None	None	None	None	None
Michael Poon	None	None	None	None	None	None	None
Miguel Quinones	None	None	None	None	None	None	None
Daniel Rader	<ul style="list-style-type: none"> Abbott AstraZeneca Bristol-Myers Squibb Merck Otsuka 	<ul style="list-style-type: none"> AstraZeneca Merck/Schering-Plough 	<ul style="list-style-type: none"> Merck 	None	None	<ul style="list-style-type: none"> Isis Pharmaceuticals 	None
Rita Redberg	None	None	None	None	None	None	None
U. Joseph Schoepf	<ul style="list-style-type: none"> Bayer-Schering Bracco GE Medrad Siemens 	<ul style="list-style-type: none"> Bayer Bracco GE Medrad Merck Siemens 	None	None	None	<ul style="list-style-type: none"> Bayer-Schering Bracco GE Medrad Siemens 	None
Samuel Wann	None	None	None	None	None	None	None

(continued on next page)

Appendix D. (continued)

Committee Member	Research Grant	Speaker	Stock Ownership	Salary	Board of Directors	Consulting Fees/ Honoraria	Expert Witness
William Guy Weigold	• Philips Medical Systems	None	None	None	None	None	None
Jonathan Weinsaft	None	None	None	None	None	None	None
William Weintraub	• Abbott	None	None	None	None	• AstraZeneca	• Celebrex litigation
	• AstraZeneca					• Bayer	• Quetiapine litigation
	• Bristol-Myers Squibb					• Bristol-Myers Squibb	
	• Otsuka					• Cardionet	
	• Sanofi-Aventis					• Eli Lilly	
						• Pfizer	
						• Sanofi-Aventis	
						• Shionogi	
Kim Allan Williams	• Bristol-Myers Squibb	• Astellas	None	None	None	• Astellas	None
	• PGx Inc.						

This table represents the relationships of the writing group, technical panel, task force, and indication reviewers with industry and other entities. These relationships were reviewed and updated in conjunction with all meetings and/or conference calls of the writing committee and technical panel during the document development process. The table does not necessarily reflect relationships at the time of publication. A person is deemed to have a significant interest in a business if the interest represents ownership of 5% or more of the voting stock or share of the business entity, or ownership of \$10 000 or more of the fair market value of the business entity; or if funds received by the person from the business entity exceed 5% of the person's gross income for the previous year. A relationship is considered to be modest if it is less than significant under the preceding definition. Relationships in this table are modest unless otherwise noted.

Staff

American College of Cardiology Foundation

John C. Lewin, MD, Chief Executive Officer

Joseph M. Allen, MA, Director, TRIP (Translating Research Into Practice)

Lindsey Law, MHS, Senior Specialist, Appropriate Use Criteria

Starr Webb, MPH, Senior Specialist, Appropriate Use Criteria

Erin A. Barrett, MPS, Senior Specialist, Science and Clinical Policy

References

1. Hendel RC, Patel MR, Kramer CM, et al: ACCF/ACR/SCCT/SCMR/ASNC/NASCI/SCAI/SIR 2006 appropriateness criteria for cardiac computed tomography and cardiac magnetic resonance imaging: a report of the American College of Cardiology Foundation Quality Strategic Directions Committee Appropriateness Criteria Working Group, American College of Radiology, Society of Cardiovascular Computed Tomography, Society for Cardiovascular Magnetic Resonance, American Society of Nuclear Cardiology, North American Society for Cardiac Imaging, Society for Cardiovascular Angiography and Interventions, and Society of Interventional Radiology. *J Am Coll Cardiol.* 2006;48:1475–97.
2. Hendel RC, Berman DS, Di Carli MF, et al: ACCF/ASNC/ACR/AHA/ASE/SCCT/SCMR/SNM 2009 appropriate use criteria for cardiac radionuclide imaging: a report of the American College of Cardiology Foundation Appropriate Use Criteria Task Force, the American Society of Nuclear Cardiology, the American College of Radiology, the American Heart Association, the American Society of Echocardiography, the Society of Cardiovascular Computed Tomography, the Society for Cardiovascular Magnetic Resonance, and the Society of Nuclear Medicine. *J Am Coll Cardiol.* 2009;53:2201–29.
3. Douglas PS, Khandheria B, Stainback RF, et al: ACCF/ASE/ACEP/AHA/ASNC/SCAI/SCCT/SCMR 2008 appropriateness criteria for stress echocardiography: a report of the American College of Cardiology Foundation Appropriateness Criteria Task Force, American Society of Echocardiography, American College of Emergency Physicians, American Heart Association, American Society of Nuclear Cardiology, Society for Cardiovascular Angiography and Interventions, Society of Cardiovascular Computed Tomography, and Society for Cardiovascular Magnetic Resonance. *J Am Coll Cardiol.* 2008;51:1127–47.
4. Patel MR, Spertus JA, Brindis RG, et al: ACCF proposed method for evaluating the appropriateness of cardiovascular imaging. *J Am Coll Cardiol.* 2005;46:1606–13.
5. Fitch K, Bernstein SJ, Aguilar MD, et al: The RAND/UCLA Appropriateness Method User's Manual. 2001. Arlington, VA.
6. Abbara S, Arbab-Zadeh A, Callister TQ, et al: SCCT guidelines for performance of coronary computed tomographic angiography: a report of the Society of Cardiovascular Computed Tomography Guidelines Committee. *J Cardiovasc Comput Tomogr.* 2009;3:190–204.
7. Raff GL, Abidov A, Achenbach S, et al: SCCT guidelines for the interpretation and reporting of coronary computed tomographic angiography. *J Cardiovasc Comput Tomogr.* 2009;3:122–36.
8. Budoff MJ, Cohen MC, Garcia MJ, et al: ACCF/AHA clinical competence statement on cardiac imaging with computed tomography and magnetic resonance: a report of the American College of Cardiology Foundation/American Heart Association/American College of Physicians Task Force on Clinical Competence and Training. *J Am Coll Cardiol.* 2005;46:383–402.

9. Gibbons RJ, Balady GJ, Bricker JT, et al: ACC/AHA 2002 guideline update for exercise testing: summary article: A report of the American College of Cardiology/American Heart Association Task Force on Practice Guidelines (Committee to Update the 1997 Exercise Testing Guidelines). *J Am Coll Cardiol.* 2002;40:1531–40.
10. National Institutes of Health: National Heart LaBI. Third Report of the National Cholesterol Education Program (NCEP) Expert Panel on Detection, Evaluation, and Treatment of High Blood Cholesterol in Adults (Adult Treatment Panel III). NIH Publication No. 02-5215. September 2002.
11. Morise AP, Haddad WJ, Beckner D: Development and validation of a clinical score to estimate the probability of coronary artery disease in men and women presenting with suspected coronary disease. *Am J Med.* 1997;102:350–6.
12. Pryor DB, Shaw L, McCants CB, et al: Value of the history and physical in identifying patients at increased risk for coronary artery disease. *Ann Intern Med.* 1993;118:81–90.
13. Gibbons RJ, Abrams J, Chatterjee K, et al: ACC/AHA 2002 guideline update for the management of patients with chronic stable angina—summary article: a report of the American College of Cardiology/American Heart Association Task Force on Practice Guidelines (Committee on the Management of Patients With Chronic Stable Angina). *J Am Coll Cardiol.* 2003;41:159–68.
14. Diamond GA, Forrester JS: Analysis of probability as an aid in the clinical diagnosis of coronary-artery disease. *N Engl J Med.* 1979;300:1350–8.
15. Douglas PS, Chen J, Gillam L, et al: Achieving Quality in Cardiovascular Imaging II: proceedings from the Second American College of Cardiology—Duke University Medical Center Think Tank on Quality in Cardiovascular Imaging. *J Am Coll Cardiol Img.* 2009;2:231–40.
16. Mark DB, Berman DS, Budoff MJ, et al: ACCF/ACR/AHA/NASCI/SAIP/SCAI/SCCT 2010 expert consensus document on coronary computed tomographic angiography: a report of the American College of Cardiology Foundation Task Force on Expert Consensus Documents. *J Am Coll Cardiol.* 2010;55:2663–99.
17. Diamond GA: A clinically relevant classification of chest discomfort. *J Am Coll Cardiol.* 1983;1:574–5.
18. Antman EM, Anbe DT, Armstrong PW, et al: ACC/AHA guidelines for the management of patients with ST-elevation myocardial infarction: a report of the American College of Cardiology/American Heart Association Task Force on Practice Guidelines (Committee to Revise the 1999 Guidelines for the Management of Patients with Acute Myocardial Infarction). *J Am Coll Cardiol.* 2004;44:e1–211.
19. Fleisher LA, Beckman JA, Brown KA, et al: 2009 ACCF/AHA focused update on perioperative beta blockade incorporated into the ACC/AHA 2007 guidelines on perioperative cardiovascular evaluation and care for noncardiac surgery: a report of the American College of Cardiology Foundation/American Heart Association Task Force on Practice Guidelines. *J Am Coll Cardiol.* 2009;54:e13–118.
20. Campeau L: Letter: grading of angina pectoris. *Circulation.* 1976;54:522–3.